



# Groundwater Dependent Ecosystems in the Corangamite Catchment Management Authority Region

Report to the Corangamite Catchment Management Authority  
CCMA Project WLE/42-009: Client Report 1

Dr Annette Barton  
Mr Peter Dahlhaus  
Mr Phil Davies  
Dr Jim Cox



**CSIRO Land and Water Science Report 32/06**  
**April 2006**

### **Copyright and Disclaimer**

© 2006 CSIRO & Corangamite Catchment Management Authority. To the extent permitted by law, all rights are reserved and no part of this publication covered by copyright may be reproduced or copied in any form or by any means except with the written permission of CSIRO Land and Water or the Corangamite Catchment Management Authority

### **Important Disclaimer:**

CSIRO advises that the information contained in this publication comprises general statements based on scientific research. The reader is advised and needs to be aware that such information may be incomplete or unable to be used in any specific situation. No reliance or actions must therefore be made on that information without seeking prior expert professional, scientific and technical advice. To the extent permitted by law, CSIRO (including its employees and consultants) excludes all liability to any person for any consequences, including but not limited to all losses, damages, costs, expenses and any other compensation, arising directly or indirectly from using this publication (in part or in whole) and any information or material contained in it.

From Phil Davies, CSIRO Land and Water  
File: Breamlea\_BR01-02.jpg  
Description: View across the Breamlea wetland.  
Photographer: Phil Davies  
© 2006 CSIRO

ISSN: 1446-6171

**Report Title**

Identification and review of the groundwater dependent ecosystems in the Corangamite Catchment Management Authority District.

**Authors**

Dr Annette Barton<sup>1</sup>  
Mr Peter Dahlhaus<sup>3</sup>  
Mr Phil Davies<sup>1,2</sup>  
Dr Jim Cox<sup>1,2</sup>

**Affiliations/Misc**

1. CSIRO Land and Water, PMB 2, Glen Osmond, SA, 5064
2. CRC for LEME, PO Box 1130, Bentley, WA, 6151
3. Dahlhaus Environmental Geology Pty Ltd, PO Box 318, Buninyong, VIC, 3357

**CSIRO Land and Water Science Report xx/xx**  
**April 2006**

# Table of Contents

<b>1. Project Description and Methodology</b> .....	<b>1</b>
1.1. Project description and aims .....	1
1.2. Ecological significance of the Corangamite CMA area .....	1
1.3. Groundwater dependent ecosystems .....	3
1.4. Salinity and the Corangamite CMA wetlands .....	3
1.5. Project methodology .....	3
<b>2. Identification of the Groundwater Dependent Ecosystems</b> .....	<b>4</b>
2.1. The Corangamite wetland inventory .....	4
2.2. Identification of the project GDEs .....	4
<b>3. Salinity and the Corangamite CMA Wetlands</b> .....	<b>5</b>
3.1. Primary salinity .....	5
3.2. Secondary salinity .....	6
3.2.1. Agricultural activities .....	6
3.2.2. Drainage schemes .....	7
3.3. Extent of salinity in the Corangamite CMA .....	8
<b>4. Research into Wetland Salinity</b> .....	<b>10</b>
4.1. Research into chemical behaviour or composition .....	10
4.2. Research into trends in water quality .....	10
4.3. Research into the causes of salinity changes .....	10
4.4. Research into groundwater-surface water interactions .....	11
<b>5. Summary and Directions</b> .....	<b>12</b>
<b>6. Reporting Schedule</b> .....	<b>12</b>

# 1. Project Description and Methodology

## 1.1. Project description and aims

This is the first client report for the Corangamite Catchment Management Authority (CMA) project WLE/42-009 – *Understanding the processes causing salinity of the groundwater dependent ecosystems of the CCMA*. This project, which is funded through the National Action Plan for Salinity and Water Quality, is aimed at building a knowledge-base of the interactions between ground and surface waters and salinity processes affecting those ecologically significant and groundwater dependent wetlands located within the jurisdiction of the CCMA.

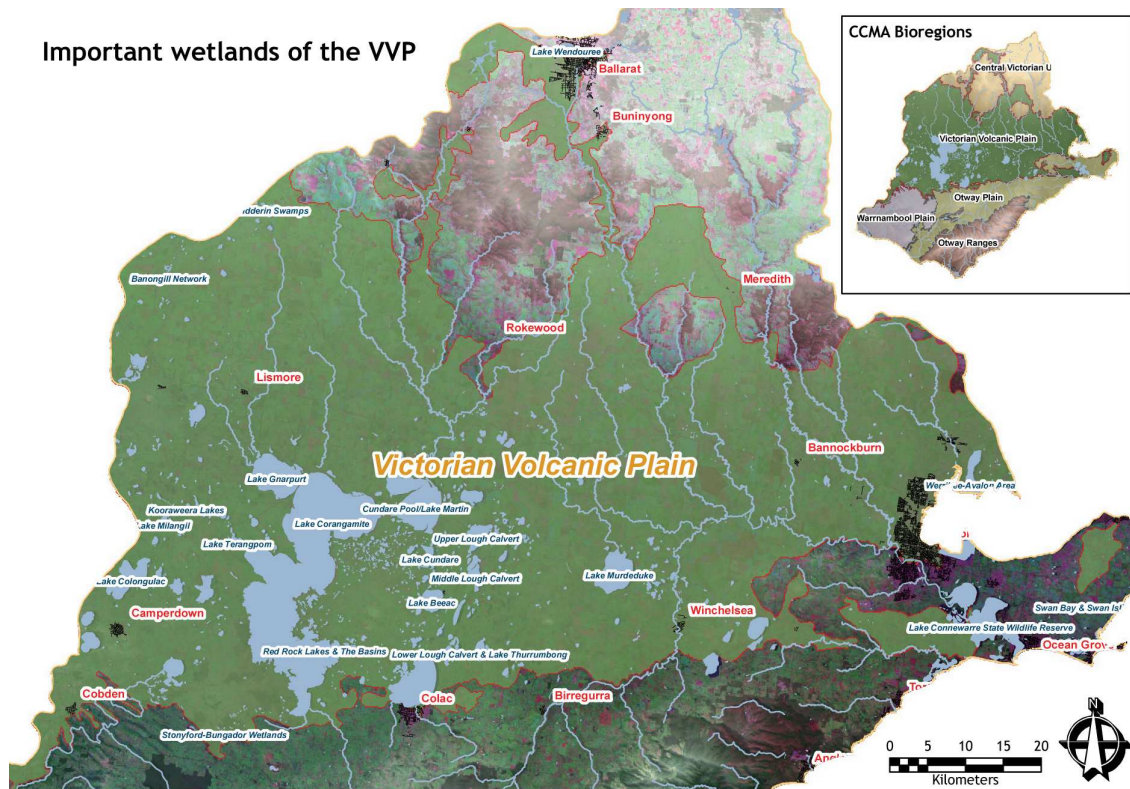
The focus of this project are the wetlands, lakes and waterbodies of the Victorian Volcanic Plains, which include (but are not limited to) lakes Corangamite, Beeac, Murdeduke, Connewarre, Cundare, Purrumbete, Colongulac, Kariah, Bullenmerri and Gnotuk. These include the small lakes, refugia and primary salinity sites of high ecological value. Key tasks include: the delineation of surface water and groundwater dependent ecosystems; quantifying spatial and temporal changes in the dependence of ecosystems on groundwater quantity and quality; development of conceptual models of surface water and/or groundwater dependence of priority wetlands; and the development of guidelines and decision making tools for wetland managers.

The objectives of this first project report are to:

- identify the important groundwater dependent ecosystems (GDEs) of the Corangamite CMA district; and
- detail current knowledge and research relating to the ground and surface water systems of these GDEs.

## 1.2. Ecological significance of the Corangamite CMA area

The Corangamite CMA jurisdiction occupies an area of 13 340 square kilometers in south-western Victoria and consists of four major river basins, namely Moorabool River, Barwon River, Lake Corangamite and Otway Coast (CCMA, 2004b). Within this area are many wetlands “which have been identified as highly valuable elements of the region’s natural ecosystems” (CCMA, 2005). Most of these (72%) are found within the Victorian Volcanic Plain bio-region which occupies 46% of the Corangamite CMA area (Figure 1).



**Figure 1. Wetlands and major waterways of the Victorian Volcanic Plain.**

The Victorian Volcanic Plain (VVP) is recognised as an ecologically significant region of Australia. The location and extent of this region, as well as the characteristics and condition of the natural environment is described in the report, *Biodiversity Action Planning: Strategic Overview for the Victorian Volcanic Plain* (Taylor et al., 2003)<sup>1</sup> as follows:

*The Victorian Volcanic Plain bioregion covers 2.3 million hectares extending over 32 local government areas and five catchment management regions. It stretches from Portland in the west to Craigieburn in the east and from Clunes in the north to Colac in the south. It has a unique and relatively early history of European settlement due partly to the ease of access of the open grassland plains. The landscape has been radically altered within the last 150 years. Most of the region is private freehold dominated by agriculture and there are small blocks of public land. The native vegetation of the Victorian Volcanic Plain bioregion is one of the most depleted in the State. Only 4.5% still has a cover of native vegetation, and less than 1.2% is in formal reserves. Eleven species of indigenous flora and fauna are extinct, whilst of the remaining species, 171 species are considered threatened including 90 plants ... and 81 animals ... The bioregion is characterised by a volcanic plain vegetated mainly by native grasses and woodlands with many natural wetlands; more than 40% of these have been altered significantly but some internationally and nationally important wetlands remain. Lake Corangamite is the largest permanent and saline lake in continental Australia. Twenty-four river systems transect the Victorian Volcanic Plain bioregion - apart from the Surrey River, most river reaches in the Victorian Volcanic Plain bioregion are in marginal to poor condition principally due to siltation from accelerated erosion, nutrient run-off from agricultural land and grazing.*

<sup>1</sup> This report formed the basis of the Landscape Plan for Corangamite's Central Zones.

### 1.3. Groundwater dependent ecosystems

Hatton and Evans, 1998, in their landmark publication, *Dependence of Ecosystems on Groundwater and its Significance to Australia*, defined groundwater “for the purposes of identifying ecosystem dependence” as *extractable* groundwater utilised to a greater or lesser extent, by plants and animals. Murray *et al.*, 2003, expand on this as follows:

*Groundwater-dependent ecosystems require the input of groundwater to maintain their current composition and functioning. Removal of groundwater from these ecosystems, or a change in the timing, quantity, quality or distribution of groundwater may influence ecosystems by, for example, changing the availability of water for transpiration by vegetation and the recruitment of seedlings into the adult population. This generally results in changes in associated fauna assemblages.*

The complexities surrounding the identification of groundwater dependent ecosystems is discussed by Hatton and Evans, 1998. They adopt a vegetation-oriented approach, while recognising the zoological and fungal components associated with these plant communities, and assume that “the magnitude of the dependence on groundwater is proportional to the fraction of the annual water budget that ecosystem derives from groundwater”.

As stated above, this project is funded through the National Action Plan (NAP) for Salinity and Water Quality which is promoting the development of action plans in those regions in Australia most affected by salinity and water quality problems. The aim of these plans is to “prevent, stabilise and reverse trends in dryland salinity affecting the sustainability of production, the conservation of biological diversity and the viability of our infrastructure” (AFFA and EA, 2000). Region 18, consisting of the Glenelg-Hopkins and Corangamite CMAs, is one of the 21 NAP target areas and the purpose of this project is provide the scientific basis for the development and management of catchment plans for the Corangamite CMA aimed at addressing salinity and water quality issues. This project is specifically aimed at identifying and creating a knowledge base for those groundwater dependent ecosystems and significant wetlands which are affected by changes in salinity and water quality.

### 1.4. Salinity and the Corangamite CMA wetlands

The Corangamite CMA area contains saline wetlands (GDEs) of national and international significance, of which the majority are found in the VVP segment of the catchment. Many of these are partially or wholly dependent on groundwater for their ecological integrity – which is now being threatened through changes in salinity levels. Both increases and decreases in salt concentrations, as well as the complete drying out of some wetlands, have resulted from human activity. Changes to flow regimes through diversions or discharges, increased surface runoff from expanding urban areas and extensive groundwater extraction have all impacted on the salinity levels of the lakes and wetlands.

### 1.5. Project methodology

In this report we review the groundwater dependent (saline) ecosystems of the Corangamite CMA. This desk-top study draws on the Australian wetland inventories and other publications, including the reports from the “feeder” project, *Defining groundwater flow systems on the basalt plains to accurately assess the risk of salinity and impacts of changed land use*, to firstly identify the groundwater dependent lakes and wetlands of the Corangamite CMA. Having defined the GDEs of relevance to this project, an overview is given, based on the extant literature, of past research which has been undertaken into changes in salinity and water quality.

## **2. Identification of the Groundwater Dependent Ecosystems**

### **2.1. The Corangamite wetland inventory**

A number of wetland surveys have been undertaken in recent years, which have included assessments of those of the Corangamite CMA and the Victorian Volcanic Plain. The recently published Corangamite Wetland Inventory (CCMA, 2005) references both the Ramsar list of wetlands of international importance (refer Frazier, 2002) and the Directory of Important Wetlands in Australia (EA, 2001) – as well as a number of other wetland surveys – to provide a catalogue of wetlands in the Corangamite region. The listing of “inventories of wetlands and inventories relevant to wetlands” which are applicable to the Corangamite region has been reproduced, from the Corangamite Wetland Inventory, in Appendix A

Table 2.

### **2.2. Identification of the project GDEs**

The Corangamite Wetland Inventory has been used to identify the groundwater dependent ecosystems of the Corangamite CMA for this project. From this inventory a listing of the wetlands of international, national and regional significance has been obtained together with the wetland type. This listing of significant lakes and wetlands of the Corangamite CMA, given in Appendix B. Sewage ponds and salt works wetland categories have not been included in this listing.

The Details given for each listed wetland are:

- Bioregion
- Landscape zone
- Wetland number
- Wetland name (if applicable)
- Wetland category
- Groundwater flow system
- Ramsar wetland (if applicable)



### 3. Salinity and the Corangamite CMA Wetlands

*Primary salinity* refers to the salinisation of land and water by naturally occurring physical and chemical processes; *secondary salinity* is that resulting from changes to the environment caused by human activities (CCMA, 2003a; CCMA, 2003b).

#### 3.1. Primary salinity

Primary salinity has historically been a feature of the Corangamite CMA region. Dahlhaus and Cox, 2005, report that “the earliest historical accounts of the landscape record shallow groundwater tables and saline lakes and drainage lines as existing features of the landscape”. Maddocks, 1967, describes research into the chemical composition of the lakes of the western district of Victoria, and points to evidence of the lakes being linked to the groundwater table. He describes the topography of the area in which both open drainage (where rivers flow from the plain to the sea) and closed drainage patterns are present and observes that the predominance of lakes in the closed basins “suggests an overall high water table, and so the influence of ground water on the composition of lake water ... particularly in lowland areas and very deep lakes”. Maddocks gives consideration to the origin of the salts in the lakes Western District. He supports the hypothesis of cyclic salt origins for the lakes but suggests that the phenomenon of saline lakes being found in close proximity to brackish and freshwater lakes is best explained by differences in the salinity of their principal water source – groundwater:

*No doubt ground water plays an important role in the supply of water to many of these lakes since their catchments are often small but their levels change seasonally, as if controlled by the water table. It has been shown that ground water salinity in the Western District varies with the aquifer medium ... Fresh basalts contain dilute waters while weathered basalts contain saline waters. In the weathered basalt, permeability is low and the clays present may act as ion filtration membranes and so a salinity build up could occur ... In fresh basalts, the high permeability and general lack of clays would not allow this mechanism to operate and so fresh waters are present. Maddocks, 1967.*

Maddocks lists evaporation as another mechanism by which increases in salinity occur. He concludes that the lakes fall into two categories: ground water lakes and surface runoff lakes – with various intermediates.

*It is suggested that Lake Corangamite and lakes along the Lough Calvert are examples of saline ground water inflow coupled with solar evaporation while Lake Colac, Lake Modewarre, and Lake Bolac are low salinity lakes due to their large surface catchment areas. Lake Purrumbete, Lake Elingamite, and Lake Bullenmerri are possible examples of lakes connected to fresh ground water aquifers. Maddocks, 1967.*

While the base source of the water may be responsible for the type of lake (freshwater, brackish, saline, etc) there is evidence to suggest that fluctuations in lake salinity levels, associated with seasonal events, have also been natural occurrences. McNiven, 1998, has reported research into drinking water sources for the aboriginal peoples which historically inhabited the Corangamite region. He points to evidence showing salinity variability due to seasonal factors. He comments that “seasonality studies suggest that salinity levels in some lakes may decrease by a third with winter rains” while anecdotal evidence points to times of drought when “it was possible to walk across Lakes Colac and Corangamite”. Williams, 1995, observes that “salt lakes are more sensitive to climatic and other factors affecting hydrological budgets than are freshwater lakes” and draws on evidence associated with the saline lake Lake Corangamite to show “the concept of a ‘mean’ or ‘normal’ level or salinity for the lake has no scientific basis”.

## **3.2. Secondary salinity**

Williams, 2001, lists the causes of secondary salinisation impacting generally on wetlands as follows:

- Clearance of natural deep-rooted vegetation from catchments and its replacement by pasture and other agricultural crops;
- Drainage of agricultural saline waste water from irrigated regions;
- Rising saline groundwaters and saline intrusion;
- Diversion of inflows from salt and freshwater lakes for irrigation;
- Construction of impoundments on rivers;
- Construction of salt storage basins; and
- Brine discharges from mining activities.

Some of these processes are applicable to the Corangamite CMA. The activities that have brought on these processes fall broadly into two categories: agricultural and drainage. These are discussed in more detail below.

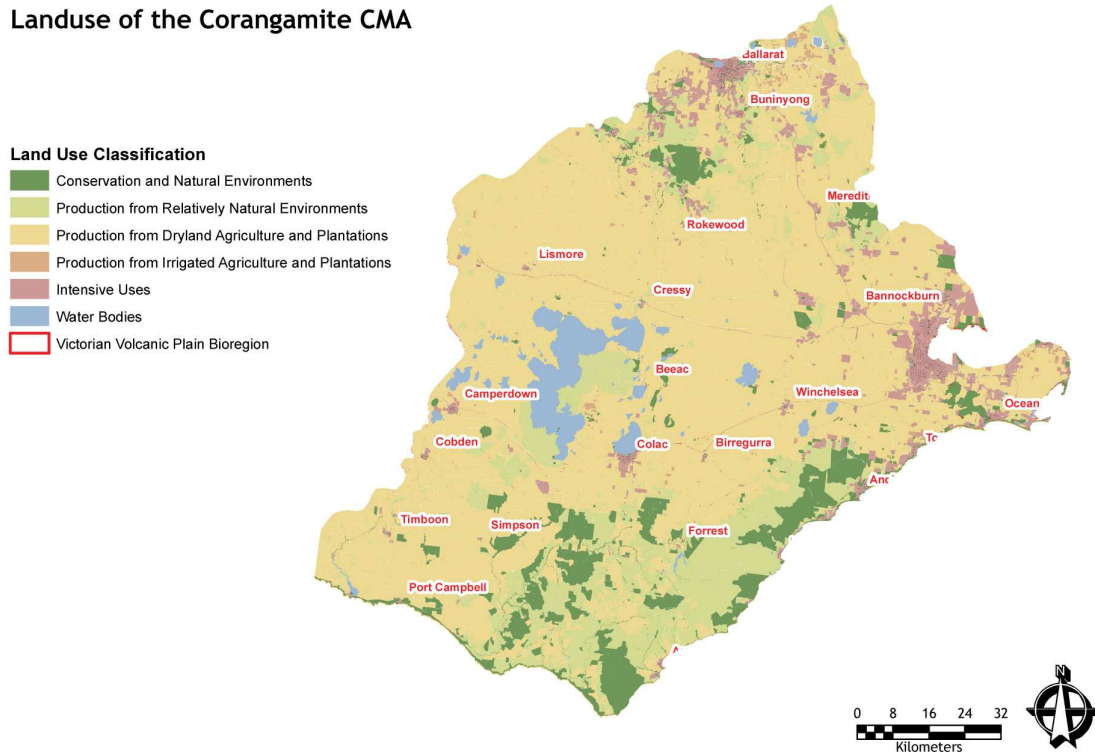
### **3.2.1. Agricultural activities**

McNiven, 1998, reports that pre-European vegetation on the Victorian Volcanic Plain consisted mainly of open grassland with scattered shrubs and trees, while forests and woodlands were found mostly in the northern sections of the Corangamite basin around the upper reaches of the Woady Yaloak River. On the Otway Ranges along the southern boundary of the Volcanic Plain are tall wet forests and on the sands flanking these ranges grow shorter drier forests, heaths and woodlands (Land Conservation Council, 1976).

Agricultural activities have dominated the Corangamite region since the mid-1800s. The basaltic plains provided good pasture land for sheep and cattle grazing and strong wool and dairying industries developed. The short lived timber industry that sprang up in the Otway Ranges in the early days of white settlement led to the clearing of large tracts of country which were then taken up for dairying. This has continued to be a major primary industry in the higher-rainfall areas of the Corangamite area (Land Conservation Council, 1976). In the Corangamite Basin today “agricultural production accounts for over 80% of ... land use including dairying, stock grazing, broad acre cropping in the north, and row cropping, notably potato growing, in the south” (NRE, 2002). As a result of these agricultural pursuits much of the indigenous vegetation has been lost (Figure 2).

Removal of native vegetation and supplementation with exotic species can affect both surface and groundwater systems. Impacts may include rising groundwater tables and/or changes to the quantity and quality of surface runoff.

## Landuse of the Corangamite CMA



**Figure 2. Aggregated landuse for the CCMA, showing predominant dryland agriculture within the VVP Bioregion.**

### 3.2.2. Drainage schemes

Two major drainage schemes operate in the Western District Lakes area of the Corangamite CMA. These schemes – the Woody Yaloak diversion scheme and the Lough Calvert drainage scheme – were constructed during the 1950s to protect rural properties from flooding.

The Woody Yaloak River is the largest tributary of the terminal lakes Corangamite and Gnarpurt. Prior to the construction of the diversion channels and after periods of heavy rainfall, the water level in the land-locked lakes would rise; lakes Corangamite, Gnarpurt and Martin would become virtually one lake and extensive areas of the surrounding agricultural lands would be inundated (CCMA, 2004a).

A similar situation applied for Lake Colac and the lower, middle and upper loughs into which it overflows. Due to the land-locked nature of the Lough Calvert system, large tracts of farming land inundated during wet periods would remain submerged for even years (CCMA, 2004a).

The Woody Yaloak diversion scheme channels water from the Woody Yaloak River (Cundare Pool) east, to Warrambine Creek, a tributary of the Barwon River (Figure 3). The *Review of Regional Drainage Schemes Summary Document* (CCMA, 2004a) states that “since its creation, about 50% of the Woody Yaloak River flow has been diverted to the Barwon River instead of Lake Corangamite”. During that time the water level in the lake has tended downwards.

The Lough Calvert system is drained via a channel from the lower lough to Birregurra Creek – another tributary of the Barwon River – and a second channel diverts water from Lake Colac to this main channel.

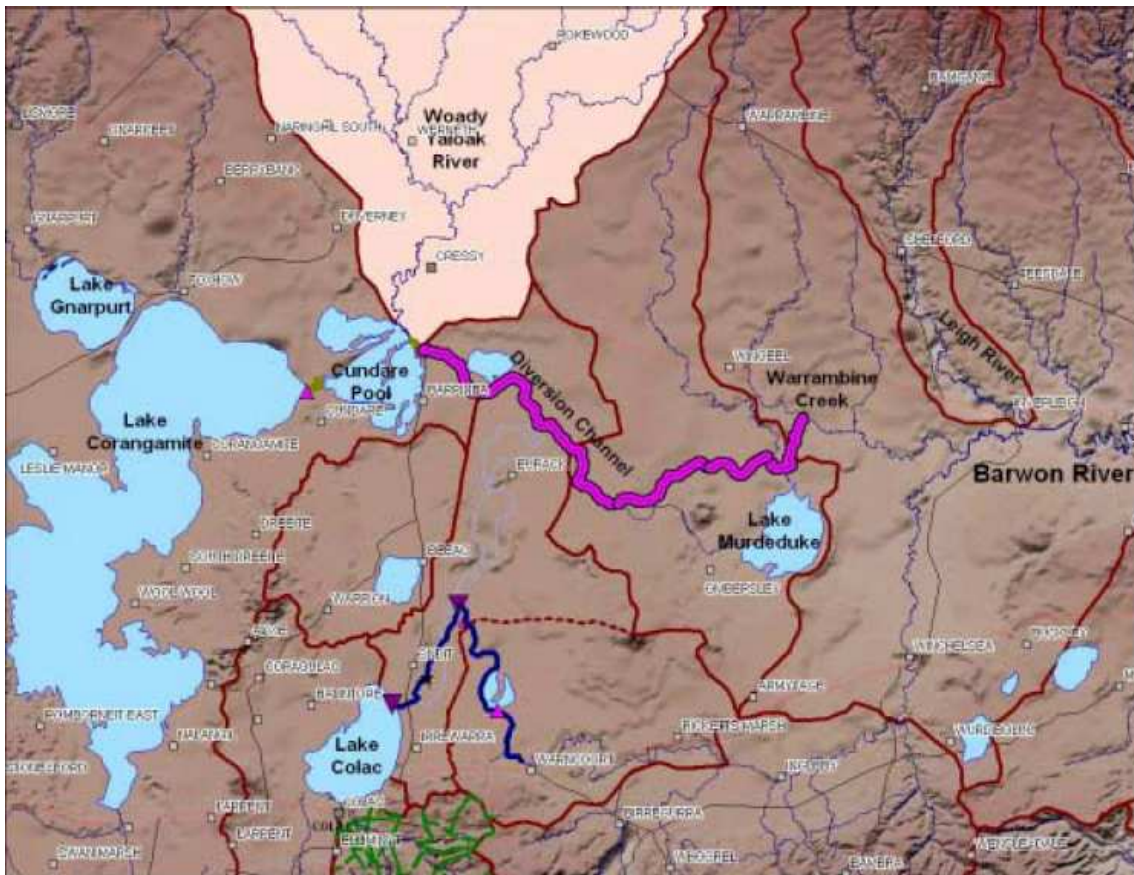
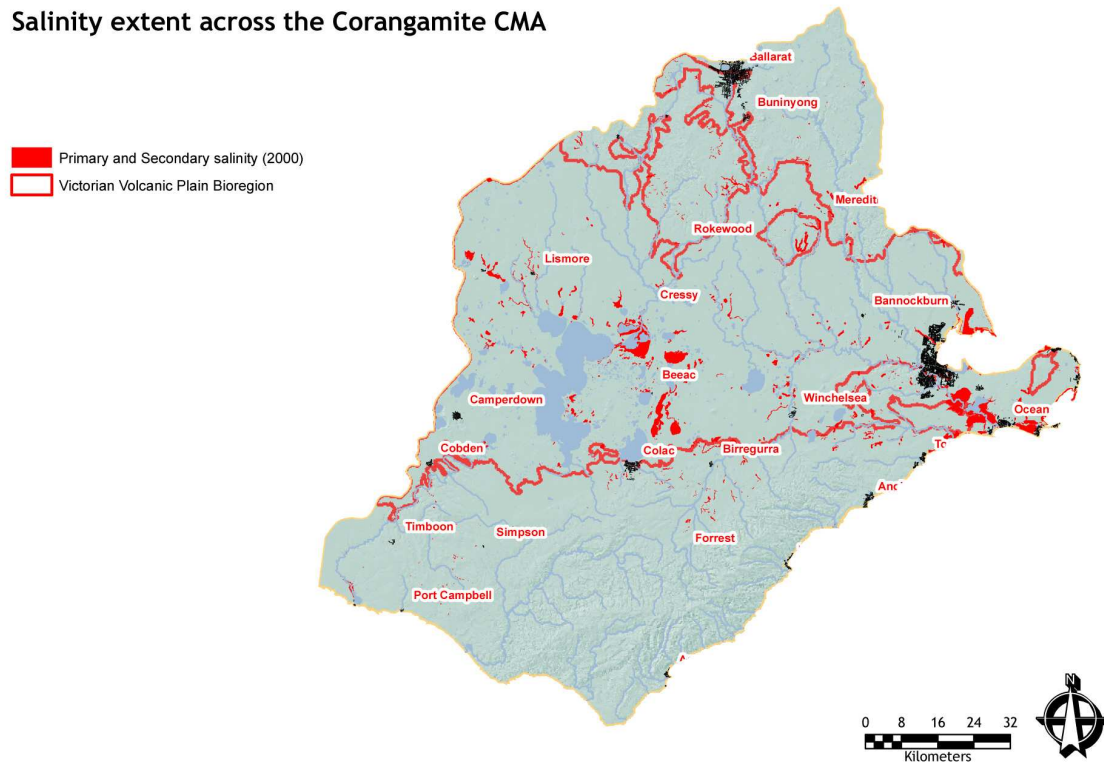


Figure 3. Woody Yaloak Diversion Scheme (Source: CCMA Review of Regional Drainage Schemes – Summary, 2004).

### 3.3. Extent of salinity in the Corangamite CMA

Uncertainty exist regarding the extent of primary and secondary salinity in the Corangamite CMA district. The 1992 Corangamite Salinity Strategy, *Restoring the Balance* (Nicholson *et al.*, 1992), gave a figure of 16,200 ha based on available data, of which two thirds was identified as secondary salinity. These figures have since been questioned. Dahlhaus *et al.*, 2002, state that 20,538 ha of salinity have now been mapped in the Corangamite CMA region, and this mapping is considered incomplete with many hectares of salt affected land still unmapped. This mapping does not distinguish between primary and secondary salinity types (Figure 4).

## Salinity extent across the Corangamite CMA



**Figure 4. Extent of primary and secondary salinity across the CCMA as mapped in 2000.**

Despite the difficulty in differentiating between the extent of primary and secondary salinity, it is believed that the major cause of increasing salinisation is land use changes “where excessive water may have caused excessive soil waterlogging and shallow, temporal water flows in the near surface” (Dahlhaus *et al.*, 2002). The Heytesbury settlement is one example where land use change has caused the onset of secondary salinity. Between 1952 and 1971 approximately 40,000 hectares of bushland was cleared for farming (principally dairying) purposes. Today salinisation and landslide problems are increasingly affecting the area (Dahlhaus *et al.*, 2002).

## **4. Research into Wetland Salinity**

This section focuses on the salinity issues associated with the wetlands of the Corangamite CMA – principally those located in the Victorian Volcanic Plain. Brief summaries are given of research relating to salinity trends and processes with emphasis given to groundwater-surface water interactions.

### **4.1. Research into chemical behaviour or composition**

Some early research into the chemical composition of some of the lakes is reported by Williams and Buckney, 1976. They investigated the ionic proportions in Lakes Beeac, Cundare, Eurack, Weering and Pink Lake. This work involved monthly sampling over a 4 year period (1969-1973). “Remarkable constancy” was found in the ionic proportions in each of the five lakes though variations, particularly in the most abundant ions, was found between the lakes. The authors suggested that such differences between localities so close “argues for strong geochemical control processes maintaining ionic constancy”.

### **4.2. Research into trends in water quality**

Williams, 1995, reports research into the changes to salinity levels in Lake Corangamite. He shows that traditionally there has been large fluctuations in the lake salinity levels due mainly to seasonal factors. He shows that since the inception of the Woody Yaloak drainage scheme, salinity levels have shown a steady increase and uses biological measures to prove this trend.

In addition to increasing lake salinities, Coram, 1996, has highlighted eutrophication issues associated with some of the Corangamite lakes as a possible indication of the impacts of agricultural activities. She reports that “algal blooms have occurred quite regularly in a number of the lakes, and opportunistic sampling carried out over the last few decades indicates that nutrient levels are generally high”.

### **4.3. Research into the causes of salinity changes**

Dahlhaus and MacEwan, 1997, question “the current axiom” that increased soil salinisation on dryland farms in Australia is always because “the clearing of the native vegetation and its replacement with shallow-rooted pastures has led to increased groundwater recharge and rising groundwater tables” (i.e. the recharge discharge model). Their research focused on three sites in south-western Victoria – two of which are located in the Corangamite CMA. They found that a model which attributes increased salinisation to lateral movement of water through the regolith as throughflow, accounted for salinisation changes better than the more accepted model based on rising groundwater resulting from increased recharge from the replacement of native vegetation with pasture. That is, land use changes which lead to excessive water causing soil waterlogging and shallow, temporal water flows in the near-surface, appear more influential than simple vegetation removal. While stating that “the adoption of European farming practices may still be responsible for the onset of salinity” they suggest that it is “alteration of the components of the water balance” – runoff, interflow and throughflow – that “has provided the mechanism of increase in the salt affected areas”.

Dahlhaus and Cox, 2005, report on a review of the causes of salinity in the Corangamite region. They point out that there is no evidence that there has been any significant rise in the groundwater table. They conclude changes to the surface and soil hydrology is the more likely cause of increasing salinity in this region and not rising groundwater tables.

#### 4.4. Research into groundwater-surface water interactions

Research undertaken by Coram (Coram, 1996) focused on the groundwater-surface water interactions around the shallow lakes Beeac, Bookar, Colongulac, Gnarpurt and Murdeduke, and builds on the research of Thompson, 1971 and Gill, 1989. Coram used potentiometric surface analysis and lake hydrology and hydrogeology to assess groundwater dependence and groundwater-surface water interactions. Water and salt balances were undertaken to determine the dominant controls on lake hydrology and salinity.

Analysis of the potentiometric surface indicated that regional groundwater flows move from the “west, north and south into the central Lake Corangamite/Lough Calvert area which acts as a regional discharge area” and “continue from this area to the east, towards the Barwon River”. “The shallow lakes appear to intercept the water table, suggesting that some interaction may occur between the lakes and the groundwater system”. Lakes were described as “throughflow” (lakes Murdeduke, Bookar, Colongulac and Gnarpurt) or “discharge” (Lake Beeac and the other lakes of the Lough Calvert). Data suggested that shallow lakes with permeable hydrostratigraphic units downgradient behaved as “throughflow” lakes, while those with relatively impermeable hydrostratigraphic units downgradient behave as “discharge” lakes.

Coram argues that variations in the lakes is due to “variations in the local hydrostratigraphy downgradient of the lakes, differences in the relative proportion of groundwater discharged from the lakes compared with other inflowing waters, and differences in the TDS content and relative proportions of major ions in the lakes”.

The chemical characteristics of lake waters were found to be dominated by  $\text{Na}^+$  and  $\text{Cl}^-$ . Water budgets pointed to precipitation and evaporation as being the dominant control on lake hydrology - “being at least as order of magnitude greater than the contribution of average surface inflows (which vary seasonally) and average groundwater inflows and outflows (which are relatively constant)”. Salt budget analysis indicated that “groundwater and surface water are likely to contribute substantial masses of salt to the lakes” with the concentration of these salts dependent on the extent to which discharge of evaporatively concentrated lake waters occurs”.

Coram found that TDS content (and hence density) has a bearing on the groundwater discharge characteristics of lakes. “Throughflow” lakes were found to have lower TDS content waters and salt mass discharge was of the same order of magnitude as salt mass inflow. Those lakes discharging small salt masses were found to have higher TDS content waters.

## 5. Summary and Directions

In this report the groundwater dependent ecosystems of the Corangamite CMA – principally the Victorian Volcanic Plain bioregion – have been identified and a portion of the literature relating to the extent and causes of the salinity issues affecting the wetlands of the Corangamite CMA has been reviewed. Some of this literature has been of a “background” nature while other has been more specific in terms of the hydrogeologic and chemical processes of the region.

This project is aimed, in the first instance, at understanding and describing the salinity causing processes associated with the significant groundwater dependent ecosystems of the Corangamite CMA. There remains a large amount of literature – both published and “grey” – still to be reviewed and its relevance assessed<sup>2</sup>.

Following on from this review an assessment will be made of what further experimental work is required in order to arrive at a more thorough understanding of the complex salinisation process effective in the region.

The next client report will include an assessment of the relevant literature and detail a plan of action for the development of a model of the salinisation processes.

## 6. Reporting Schedule

The research and reporting which remain to be completed as part of this project are summarised in Table 1.

**Table 1. Remaining project components and milestones**

<b>Research component</b>	<b>Timing</b>	<b>Report no.</b>	<b>Due date</b>
Rapid assessment and benchmarking of the groundwater quality and related ecological category and conditions of the VVP GDEs.	Apr 06 – Sep 06	2	30 June 2006
Measurement of the groundwater quality (chemistry) of the VVP GDEs		3	30 Sept. 2006
Analysis and result reporting Research plan 2007	Oct 06 – Dec 06	4	31 Dec. 2006

<sup>2</sup> A large amount of the grey literature has now been referenced on the Corangamite website: <http://www.aanro.net/ccma/page/search.htm>



## Appendix A

**Table 2. Existing inventories and databases of wetlands within the Corangamite region (source: CCMA, 2005).**

Title	Description	Reference
Regional Inventories		
Victoria: Wetland_1799 & Wetland_1994	Digital wetland data from Corrick (1982). Identifies 1,457 wetlands within the Corangamite region over 1 ha in size.	DCNR (1995) Wetland database. Flora and Fauna Branch, Dept of Conservation & Resources, Victoria.
Atlas of Victorian Wildlife	Contains fauna records for Victoria including those of breeding and non-breeding waterbirds on 134 wetlands within the Corangamite region.	DNRE (2002a) Atlas of Victorian wildlife (database). Dept of Natural Resources and Environment, Victoria.
Victorian Brolga Survey Database	Contains location data and wetland descriptions of Brolga nest sites in south-western Victoria, including 124 wetlands within the Corangamite region.	Harding C. (2000) Victorian brolga survey database – user manual. Unpublished report, Centre for Environmental Management, University of Ballarat, Ballarat.
Wetlands Resource Assessment Package (WRAP)	Database containing data for conservation value assessment (CVA) of wetlands. Incomplete data on 1,500 wetlands within the Corangamite region is included (uses wetlands identified by Corrick (1982)).	Australian Biological Research Group (1988) Conservation values of lakes and wetlands in the south-western region Victoria – technical report. Report to Dept of Water Resources Victoria, Dept of Conservation Forests and Lands.
Water Status of Wetlands in the Western District – 1982-83 Drought Survey.	Contains data on the water status (water surface area) of wetlands during 1982-83 drought. Contains information on 323 permanent wetlands classified by Corrick (1982).	Dale and Myers (1984)
Wetland Management and Consultation Summary (Swampcare – Field and Game Australia)	Provides a summary of wetland characteristics relevant to Field and Game Australia. Includes management objectives, assessment of character, threats and location details. Only one wetland detailed for CCMA – Ross Creek Swamps.	Field and Game Australia (2000)
Flora Information System	Contains flora records for Victoria. 71 wetlands within the	DNRE (2002b) Flora Information System (database). Dept of Natural Resources and

	Corangamite region contain flora records.	Environment, Victoria.
National Inventories A Directory of Important Wetlands in Australia	Lists nationally important wetlands and summarises wetland values for each. A total of 24 wetland complexes have been identified as nationally important within the Corangamite region (available as an online searchable database).	EA (2001) A directory of important wetlands in Australia, 3 <sup>rd</sup> edn. Environment Australia, Canberra.
International Inventories Wetlands of international importance (Ramsar sites)	Inventories of wetlands listed as internationally important under the Ramsar Convention. Contains information sheets on Western District Lakes and Port Phillip Bay (Western Shoreline) and Bellarine Peninsula.	Ramsar Convention Bureau (1999) Ramsar information service. <a href="http://www.wetlands.org/RSDB/default.htm">www.wetlands.org/RSDB/default.htm</a>

## Appendix B

Table 3. Inventory of wetlands in the Corangamite CMA region

Bioregion	Landscape zone	Wetland No.	Wetland Name	Category	GFS No.	GFS Description	GFS System	Ramsar site
Central Victorian Uplands	LEIGH	536188		Freshwater meadow	GFS_01	Quaternary sediments	Local	
	LEIGH	438240		Permanent open freshwater	GFS_01	Quaternary sediments	Local	
	LEIGH	448213		Permanent open freshwater	GFS_01	Quaternary sediments	Local	
	LEIGH	455185		Permanent open freshwater	GFS_01	Quaternary sediments	Local	
	LEIGH	472225		Permanent open freshwater	GFS_01	Quaternary sediments	Local	
	LEIGH	476259		Permanent open freshwater	GFS_01	Quaternary sediments	Local	
	LEIGH	535363		Permanent open freshwater	GFS_01	Quaternary sediments	Local	
	LEIGH	602245		Permanent open freshwater	GFS_01	Quaternary sediments	Local	
	LEIGH	608240		Permanent open freshwater	GFS_01	Quaternary sediments	Local	
	LEIGH	594396		Permanent open freshwater	GFS_07	Granitic rocks (outcrop)	Local	
	LEIGH	448175		Permanent open freshwater	GFS_12	Palaeozoic sedimentary rocks (outcrop)	Intermediate	
	LEIGH	516155		Permanent open freshwater	GFS_12	Palaeozoic sedimentary rocks (outcrop)	Intermediate	
	LEIGH	566426		Permanent open freshwater	GFS_12	Palaeozoic sedimentary rocks (outcrop)	Intermediate	
	LEIGH	581225		Permanent open freshwater	GFS_12	Palaeozoic sedimentary rocks (outcrop)	Intermediate	
	LEIGH	589238		Permanent open freshwater	GFS_12	Palaeozoic sedimentary rocks (outcrop)	Intermediate	
	LEIGH	592286		Permanent open freshwater	GFS_12	Palaeozoic sedimentary rocks (outcrop)	Intermediate	
	LEIGH	599250		Permanent open freshwater	GFS_12	Palaeozoic sedimentary rocks (outcrop)	Intermediate	
	LEIGH	601277		Permanent open freshwater	GFS_12	Palaeozoic sedimentary rocks (outcrop)	Intermediate	
	LEIGH	609992		Permanent open freshwater	GFS_12	Palaeozoic sedimentary rocks (outcrop)	Intermediate	
	LEIGH	589270		Permanent open freshwater	GFS_13	Central Highlands volcanics (outcrop)	Intermediate	
	LEIGH	591379		Permanent open freshwater	GFS_13	Central Highlands volcanics (outcrop)	Intermediate	
	LEIGH	596275		Permanent open freshwater	GFS_13	Central Highlands volcanics (outcrop)	Intermediate	
	LEIGH	602437		Permanent open freshwater	GFS_13	Central Highlands volcanics (outcrop)	Intermediate	
	LEIGH	604392		Permanent open freshwater	GFS_13	Central Highlands volcanics (outcrop)	Intermediate	
	LEIGH	610256		Permanent open freshwater	GFS_13	Central Highlands volcanics (outcrop)	Intermediate	
	LEIGH	614429		Permanent open freshwater	GFS_13	Central Highlands volcanics (outcrop)	Intermediate	
	LEIGH	625436		Permanent open freshwater	GFS_13	Central Highlands volcanics (outcrop)	Intermediate	
LEIGH	627233		Permanent open freshwater	GFS_13	Central Highlands volcanics (outcrop)	Intermediate		
LEIGH	628439		Permanent open freshwater	GFS_13	Central Highlands volcanics (outcrop)	Intermediate		
LEIGH	634437		Permanent open freshwater	GFS_13	Central Highlands volcanics (outcrop)	Intermediate		

Bioregion	Landscape zone	Wetland No.	Wetland Name	Category	GFS No.	GFS Description	GFS System	Ramsar site
Central Victorian Uplands	LEIGH	638445		Permanent open freshwater	GFS_13	Central Highlands volcanics (outcrop)	Intermediate	
	LEIGH	640449		Permanent open freshwater	GFS_13	Central Highlands volcanics (outcrop)	Intermediate	
	LEIGH	641446		Permanent open freshwater	GFS_13	Central Highlands volcanics (outcrop)	Intermediate	
	LEIGH	503399	Lake Wendouree	Deep freshwater marsh				
	LEIGH	580438		Permanent open freshwater				
	LEIGH	592404		Permanent open freshwater				
	LEIGH	608397		Permanent open freshwater				
	MID BARWON	405034		Permanent open freshwater	GFS_12	Palaeozoic sedimentary rocks (outcrop)	Intermediate	
	MOORABOOL	488099		Deep freshwater marsh	GFS_01	Quaternary sediments	Local	
	MOORABOOL	350430		Permanent open freshwater	GFS_01	Quaternary sediments	Local	
	MOORABOOL	350439		Permanent open freshwater	GFS_01	Quaternary sediments	Local	
	MOORABOOL	353425		Permanent open freshwater	GFS_01	Quaternary sediments	Local	
	MOORABOOL	356414		Permanent open freshwater	GFS_01	Quaternary sediments	Local	
	MOORABOOL	358314		Permanent open freshwater	GFS_01	Quaternary sediments	Local	
	MOORABOOL	380360		Permanent open freshwater	GFS_01	Quaternary sediments	Local	
	MOORABOOL	398376		Permanent open freshwater	GFS_01	Quaternary sediments	Local	
	MOORABOOL	449333		Permanent open freshwater	GFS_01	Quaternary sediments	Local	
	MOORABOOL	456513		Permanent open freshwater	GFS_01	Quaternary sediments	Local	
	MOORABOOL	484383		Permanent open freshwater	GFS_01	Quaternary sediments	Local	
	MOORABOOL	485165		Permanent open freshwater	GFS_01	Quaternary sediments	Local	
	MOORABOOL	497387		Permanent open freshwater	GFS_01	Quaternary sediments	Local	
	MOORABOOL	522206		Permanent open freshwater	GFS_01	Quaternary sediments	Local	
	MOORABOOL	527156		Permanent open freshwater	GFS_01	Quaternary sediments	Local	
	MOORABOOL	527165		Permanent open freshwater	GFS_01	Quaternary sediments	Local	
	MOORABOOL	530160		Permanent open freshwater	GFS_01	Quaternary sediments	Local	
	MOORABOOL	533162		Permanent open freshwater	GFS_01	Quaternary sediments	Local	
	MOORABOOL	535154		Permanent open freshwater	GFS_01	Quaternary sediments	Local	
	MOORABOOL	544090		Permanent open freshwater	GFS_01	Quaternary sediments	Local	
	MOORABOOL	591357		Permanent open freshwater	GFS_01	Quaternary sediments	Local	
	MOORABOOL	633341		Permanent open freshwater	GFS_01	Quaternary sediments	Local	
	MOORABOOL	506096		Deep freshwater marsh	GFS_03	Highlands gravel caps (outcrop)	Local	
	MOORABOOL	519098		Deep freshwater marsh	GFS_03	Highlands gravel caps (outcrop)	Local	
	MOORABOOL	412207		Permanent open freshwater	GFS_03	Highlands gravel caps (outcrop)	Local	
MOORABOOL	420106		Permanent open freshwater	GFS_03	Highlands gravel caps (outcrop)	Local		

Bioregion	Landscape zone	Wetland No.	Wetland Name	Category	GFS No.	GFS Description	GFS System	Ramsar site
Central Victorian Uplands	MOORABOOL	440052		Permanent open freshwater	GFS_03	Highlands gravel caps (outcrop)	Local	
	MOORABOOL	465233		Permanent open freshwater	GFS_03	Highlands gravel caps (outcrop)	Local	
	MOORABOOL	483155		Permanent open freshwater	GFS_03	Highlands gravel caps (outcrop)	Local	
	MOORABOOL	526162		Permanent open freshwater	GFS_03	Highlands gravel caps (outcrop)	Local	
	MOORABOOL	538159		Permanent open freshwater	GFS_03	Highlands gravel caps (outcrop)	Local	
	MOORABOOL	504097		Shallow freshwater marsh	GFS_03	Highlands gravel caps (outcrop)	Local	
	MOORABOOL	536103		Permanent open freshwater	GFS_03	Highlands gravel caps (outcrop)	Local	
	MOORABOOL	404321		Permanent open freshwater	GFS_07	Granitic rocks (outcrop)	Local	
	MOORABOOL	404342		Permanent open freshwater	GFS_07	Granitic rocks (outcrop)	Local	
	MOORABOOL	406340		Permanent open freshwater	GFS_07	Granitic rocks (outcrop)	Local	
	MOORABOOL	409328		Permanent open freshwater	GFS_07	Granitic rocks (outcrop)	Local	
	MOORABOOL	423333		Permanent open freshwater	GFS_07	Granitic rocks (outcrop)	Local	
	MOORABOOL	379244		Permanent open freshwater	GFS_12	Palaeozoic sedimentary rocks (outcrop)	Intermediate	
	MOORABOOL	392262		Permanent open freshwater	GFS_12	Palaeozoic sedimentary rocks (outcrop)	Intermediate	
	MOORABOOL	410195		Permanent open freshwater	GFS_12	Palaeozoic sedimentary rocks (outcrop)	Intermediate	
	MOORABOOL	438404		Permanent open freshwater	GFS_12	Palaeozoic sedimentary rocks (outcrop)	Intermediate	
	MOORABOOL	444317		Permanent open freshwater	GFS_12	Palaeozoic sedimentary rocks (outcrop)	Intermediate	
	MOORABOOL	447323		Permanent open freshwater	GFS_12	Palaeozoic sedimentary rocks (outcrop)	Intermediate	
	MOORABOOL	465437		Permanent open freshwater	GFS_12	Palaeozoic sedimentary rocks (outcrop)	Intermediate	
	MOORABOOL	467432		Permanent open freshwater	GFS_12	Palaeozoic sedimentary rocks (outcrop)	Intermediate	
	MOORABOOL	469164		Permanent open freshwater	GFS_12	Palaeozoic sedimentary rocks (outcrop)	Intermediate	
	MOORABOOL	478398		Permanent open freshwater	GFS_12	Palaeozoic sedimentary rocks (outcrop)	Intermediate	
	MOORABOOL	483330		Permanent open freshwater	GFS_12	Palaeozoic sedimentary rocks (outcrop)	Intermediate	
	MOORABOOL	543030		Permanent open freshwater	GFS_12	Palaeozoic sedimentary rocks (outcrop)	Intermediate	
	MOORABOOL	558343		Permanent open freshwater	GFS_12	Palaeozoic sedimentary rocks (outcrop)	Intermediate	
	MOORABOOL	384354		Freshwater meadow	GFS_13	Central Highlands volcanics (outcrop)	Intermediate	
	MOORABOOL	351370		Permanent open freshwater	GFS_13	Central Highlands volcanics (outcrop)	Intermediate	
	MOORABOOL	358374		Permanent open freshwater	GFS_13	Central Highlands volcanics (outcrop)	Intermediate	
	MOORABOOL	358400		Permanent open freshwater	GFS_13	Central Highlands volcanics (outcrop)	Intermediate	
	MOORABOOL	358452		Permanent open freshwater	GFS_13	Central Highlands volcanics (outcrop)	Intermediate	
	MOORABOOL	358478		Permanent open freshwater	GFS_13	Central Highlands volcanics (outcrop)	Intermediate	
	MOORABOOL	363377		Permanent open freshwater	GFS_13	Central Highlands volcanics (outcrop)	Intermediate	
	MOORABOOL	367359		Permanent open freshwater	GFS_13	Central Highlands volcanics (outcrop)	Intermediate	
MOORABOOL	374375		Permanent open freshwater	GFS_13	Central Highlands volcanics (outcrop)	Intermediate		

Bioregion	Landscape zone	Wetland No.	Wetland Name	Category	GFS No.	GFS Description	GFS System	Ramsar site
Central Victorian Uplands	MOORABOOL	387407		Permanent open freshwater	GFS_13	Central Highlands volcanics (outcrop)	Intermediate	
	MOORABOOL	387430		Permanent open freshwater	GFS_13	Central Highlands volcanics (outcrop)	Intermediate	
	MOORABOOL	391407		Permanent open freshwater	GFS_13	Central Highlands volcanics (outcrop)	Intermediate	
	MOORABOOL	391418		Permanent open freshwater	GFS_13	Central Highlands volcanics (outcrop)	Intermediate	
	MOORABOOL	395414		Permanent open freshwater	GFS_13	Central Highlands volcanics (outcrop)	Intermediate	
	MOORABOOL	395428		Permanent open freshwater	GFS_13	Central Highlands volcanics (outcrop)	Intermediate	
	MOORABOOL	397413		Permanent open freshwater	GFS_13	Central Highlands volcanics (outcrop)	Intermediate	
	MOORABOOL	400412		Permanent open freshwater	GFS_13	Central Highlands volcanics (outcrop)	Intermediate	
	MOORABOOL	403452		Permanent open freshwater	GFS_13	Central Highlands volcanics (outcrop)	Intermediate	
	MOORABOOL	404406		Permanent open freshwater	GFS_13	Central Highlands volcanics (outcrop)	Intermediate	
	MOORABOOL	405390		Permanent open freshwater	GFS_13	Central Highlands volcanics (outcrop)	Intermediate	
	MOORABOOL	407337		Permanent open freshwater	GFS_13	Central Highlands volcanics (outcrop)	Intermediate	
	MOORABOOL	408333		Permanent open freshwater	GFS_13	Central Highlands volcanics (outcrop)	Intermediate	
	MOORABOOL	412367		Permanent open freshwater	GFS_13	Central Highlands volcanics (outcrop)	Intermediate	
	MOORABOOL	413372		Permanent open freshwater	GFS_13	Central Highlands volcanics (outcrop)	Intermediate	
	MOORABOOL	429393		Permanent open freshwater	GFS_13	Central Highlands volcanics (outcrop)	Intermediate	
	MOORABOOL	434347		Permanent open freshwater	GFS_13	Central Highlands volcanics (outcrop)	Intermediate	
	MOORABOOL	437385		Permanent open freshwater	GFS_13	Central Highlands volcanics (outcrop)	Intermediate	
	MOORABOOL	476415		Permanent open freshwater	GFS_13	Central Highlands volcanics (outcrop)	Intermediate	
	MOORABOOL	499193		Permanent open freshwater	GFS_13	Central Highlands volcanics (outcrop)	Intermediate	
	MOORABOOL	503184		Permanent open freshwater	GFS_13	Central Highlands volcanics (outcrop)	Intermediate	
	MOORABOOL	504393		Permanent open freshwater	GFS_13	Central Highlands volcanics (outcrop)	Intermediate	
	MOORABOOL	508224		Permanent open freshwater	GFS_13	Central Highlands volcanics (outcrop)	Intermediate	
	MOORABOOL	542243		Permanent open freshwater	GFS_13	Central Highlands volcanics (outcrop)	Intermediate	
	MOORABOOL	568335		Permanent open freshwater	GFS_13	Central Highlands volcanics (outcrop)	Intermediate	
	MOORABOOL	588297		Permanent open freshwater	GFS_13	Central Highlands volcanics (outcrop)	Intermediate	
	MOORABOOL	594346		Permanent open freshwater	GFS_13	Central Highlands volcanics (outcrop)	Intermediate	
	MOORABOOL	597347		Permanent open freshwater	GFS_13	Central Highlands volcanics (outcrop)	Intermediate	
	MOORABOOL	600358		Permanent open freshwater	GFS_13	Central Highlands volcanics (outcrop)	Intermediate	
	MOORABOOL	605353		Permanent open freshwater	GFS_13	Central Highlands volcanics (outcrop)	Intermediate	
	MOORABOOL	609347		Permanent open freshwater	GFS_13	Central Highlands volcanics (outcrop)	Intermediate	
	MOORABOOL	609349		Permanent open freshwater	GFS_13	Central Highlands volcanics (outcrop)	Intermediate	
MOORABOOL	610323		Permanent open freshwater	GFS_13	Central Highlands volcanics (outcrop)	Intermediate		
MOORABOOL	621349		Permanent open freshwater	GFS_13	Central Highlands volcanics (outcrop)	Intermediate		

Bioregion	Landscape zone	Wetland No.	Wetland Name	Category	GFS No.	GFS Description	GFS System	Ramsar site
Central Victorian Uplands	MOORABOOL	623369		Permanent open freshwater	GFS_13	Central Highlands volcanics (outcrop)	Intermediate	
	MOORABOOL	626354		Permanent open freshwater	GFS_13	Central Highlands volcanics (outcrop)	Intermediate	
	MOORABOOL	626368		Permanent open freshwater	GFS_13	Central Highlands volcanics (outcrop)	Intermediate	
	MOORABOOL	628338		Permanent open freshwater	GFS_13	Central Highlands volcanics (outcrop)	Intermediate	
	MOORABOOL	628377		Permanent open freshwater	GFS_13	Central Highlands volcanics (outcrop)	Intermediate	
	MOORABOOL	632409		Permanent open freshwater	GFS_13	Central Highlands volcanics (outcrop)	Intermediate	
	MOORABOOL	633325		Permanent open freshwater	GFS_13	Central Highlands volcanics (outcrop)	Intermediate	
	MOORABOOL	636427		Permanent open freshwater	GFS_13	Central Highlands volcanics (outcrop)	Intermediate	
	MOORABOOL	637377		Permanent open freshwater	GFS_13	Central Highlands volcanics (outcrop)	Intermediate	
	MOORABOOL	642383		Permanent open freshwater	GFS_13	Central Highlands volcanics (outcrop)	Intermediate	
	MOORABOOL	643362		Permanent open freshwater	GFS_13	Central Highlands volcanics (outcrop)	Intermediate	
	MOORABOOL	644358		Permanent open freshwater	GFS_13	Central Highlands volcanics (outcrop)	Intermediate	
	MOORABOOL	644379		Permanent open freshwater	GFS_13	Central Highlands volcanics (outcrop)	Intermediate	
	MOORABOOL	648384		Permanent open freshwater	GFS_13	Central Highlands volcanics (outcrop)	Intermediate	
	MOORABOOL	648401		Permanent open freshwater	GFS_13	Central Highlands volcanics (outcrop)	Intermediate	
	MOORABOOL	649446		Permanent open freshwater	GFS_13	Central Highlands volcanics (outcrop)	Intermediate	
	MOORABOOL	651436		Permanent open freshwater	GFS_13	Central Highlands volcanics (outcrop)	Intermediate	
	MOORABOOL	363441		Permanent open freshwater				
	MOORABOOL	370409		Permanent open freshwater				
	MOORABOOL	409272		Permanent open freshwater				
	MOORABOOL	420444		Permanent open freshwater				
	MOORABOOL	474454		Permanent open freshwater				
	MOORABOOL	505343		Permanent open freshwater				
	WOADY YALOAK	415105		Deep freshwater marsh	GFS_01	Quaternary sediments	Local	
	WOADY YALOAK	168253		Freshwater meadow	GFS_01	Quaternary sediments	Local	
	WOADY YALOAK	177243		Freshwater meadow	GFS_01	Quaternary sediments	Local	
	WOADY YALOAK	188233		Freshwater meadow	GFS_01	Quaternary sediments	Local	
	WOADY YALOAK	306113		Freshwater meadow	GFS_01	Quaternary sediments	Local	
	WOADY YALOAK	385361		Freshwater meadow	GFS_01	Quaternary sediments	Local	
	WOADY YALOAK	191277		Permanent open freshwater	GFS_01	Quaternary sediments	Local	
	WOADY YALOAK	290235		Permanent open freshwater	GFS_01	Quaternary sediments	Local	
	WOADY YALOAK	346251		Permanent open freshwater	GFS_01	Quaternary sediments	Local	
	WOADY YALOAK	384330		Permanent open freshwater	GFS_01	Quaternary sediments	Local	
WOADY YALOAK	402021		Permanent open freshwater	GFS_01	Quaternary sediments	Local		

Bioregion	Landscape zone	Wetland No.	Wetland Name	Category	GFS No.	GFS Description	GFS System	Ramsar site
Central Victorian Uplands	WOADY YALOA	502122		Permanent open freshwater	GFS_01	Quaternary sediments	Local	
	WOADY YALOA	293150		Permanent open freshwater	GFS_03	Highlands gravel caps (outcrop)	Local	
	WOADY YALOA	377158		Permanent open freshwater	GFS_03	Highlands gravel caps (outcrop)	Local	
	WOADY YALOA	392336		Permanent open freshwater	GFS_03	Highlands gravel caps (outcrop)	Local	
	WOADY YALOA	449083		Permanent open freshwater	GFS_03	Highlands gravel caps (outcrop)	Local	
	WOADY YALOA	175253		Freshwater meadow	GFS_07	Granitic rocks (outcrop)	Local	
	WOADY YALOA	203245		Freshwater meadow	GFS_07	Granitic rocks (outcrop)	Local	
	WOADY YALOA	171238		Permanent open freshwater	GFS_07	Granitic rocks (outcrop)	Local	
	WOADY YALOA	210240		Permanent open freshwater	GFS_07	Granitic rocks (outcrop)	Local	
	WOADY YALOA	195279		Permanent open freshwater	GFS_12	Palaeozoic sedimentary rocks (outcrop)	Intermediate	
	WOADY YALOA	196277		Permanent open freshwater	GFS_12	Palaeozoic sedimentary rocks (outcrop)	Intermediate	
	WOADY YALOA	254264		Permanent open freshwater	GFS_12	Palaeozoic sedimentary rocks (outcrop)	Intermediate	
	WOADY YALOA	271261		Permanent open freshwater	GFS_12	Palaeozoic sedimentary rocks (outcrop)	Intermediate	
	WOADY YALOA	336216		Permanent open freshwater	GFS_12	Palaeozoic sedimentary rocks (outcrop)	Intermediate	
	WOADY YALOA	360312		Permanent open freshwater	GFS_12	Palaeozoic sedimentary rocks (outcrop)	Intermediate	
	WOADY YALOA	362208		Permanent open freshwater	GFS_12	Palaeozoic sedimentary rocks (outcrop)	Intermediate	
	WOADY YALOA	378322		Permanent open freshwater	GFS_12	Palaeozoic sedimentary rocks (outcrop)	Intermediate	
	WOADY YALOA	381299		Permanent open freshwater	GFS_12	Palaeozoic sedimentary rocks (outcrop)	Intermediate	
	WOADY YALOA	387258		Permanent open freshwater	GFS_12	Palaeozoic sedimentary rocks (outcrop)	Intermediate	
	WOADY YALOA	397036		Permanent open freshwater	GFS_12	Palaeozoic sedimentary rocks (outcrop)	Intermediate	
	WOADY YALOA	404022		Permanent open freshwater	GFS_12	Palaeozoic sedimentary rocks (outcrop)	Intermediate	
	WOADY YALOA	479064		Permanent open freshwater	GFS_12	Palaeozoic sedimentary rocks (outcrop)	Intermediate	
	WOADY YALOA	480414		Shallow freshwater marsh	GFS_13	Central Highlands volcanics (outcrop)	Intermediate	
	WOADY YALOA	404272		Deep freshwater marsh				
	WOADY YALOA	462416		Deep freshwater marsh				
	WOADY YALOA	422437		Shallow freshwater marsh				
	MOORABOOL	452524		Permanent open freshwater	GFS_12	Palaeozoic sedimentary rocks (outcrop)	Intermediate	
MOORABOOL	527101		Permanent open freshwater					
MOORABOOL	537094		Permanent open freshwater					
Otway Plain	BELLARINE	680714		Deep freshwater marsh	GFS_01	Quaternary sediments	Local	
	BELLARINE	687702		Deep freshwater marsh	GFS_01	Quaternary sediments	Local	
	BELLARINE	739680	Lake Connewarre State Wildlife Reserve	Deep freshwater marsh	GFS_01	Quaternary sediments	Local	
	BELLARINE	858710		Deep freshwater marsh	GFS_01	Quaternary sediments	Local	



Bioregion	Landscape zone	Wetland No.	Wetland Name	Category	GFS No.	GFS Description	GFS System	Ramsar site
Otway Plain	BELLARINE	714660		Freshwater meadow	GFS_01	Quaternary sediments	Local	
	BELLARINE	719659		Freshwater meadow	GFS_01	Quaternary sediments	Local	
	BELLARINE	730659		Freshwater meadow	GFS_01	Quaternary sediments	Local	
	BELLARINE	732697		Freshwater meadow	GFS_01	Quaternary sediments	Local	
	BELLARINE	759691		Freshwater meadow	GFS_01	Quaternary sediments	Local	
	BELLARINE	660724		Permanent open freshwater	GFS_01	Quaternary sediments	Local	
	BELLARINE	758696		Permanent open freshwater	GFS_01	Quaternary sediments	Local	
	BELLARINE	831727		Permanent open freshwater	GFS_01	Quaternary sediments	Local	
	BELLARINE	858717		Permanent open freshwater	GFS_01	Quaternary sediments	Local	
	BELLARINE	860719		Permanent open freshwater	GFS_01	Quaternary sediments	Local	
	BELLARINE	887693		Permanent open freshwater	GFS_01	Quaternary sediments	Local	
	BELLARINE	906595		Permanent open freshwater	GFS_01	Quaternary sediments	Local	
	BELLARINE	951738		Permanent open freshwater	GFS_01	Quaternary sediments	Local	
	BELLARINE	956747		Permanent open freshwater	GFS_01	Quaternary sediments	Local	
	BELLARINE	960694		Permanent open freshwater	GFS_01	Quaternary sediments	Local	
	BELLARINE	969701		Permanent open freshwater	GFS_01	Quaternary sediments	Local	
	BELLARINE	981726		Permanent open freshwater	GFS_01	Quaternary sediments	Local	
	BELLARINE	981749		Permanent open freshwater	GFS_01	Quaternary sediments	Local	
	BELLARINE	899620		Permanent saline	GFS_01	Quaternary sediments	Local	
	BELLARINE	900606		Permanent saline	GFS_01	Quaternary sediments	Local	
	BELLARINE	911619		Permanent saline	GFS_01	Quaternary sediments	Local	
	BELLARINE	740654	Lake Connewarre State Wildlife Reserve	Semi-permanent saline	GFS_01	Quaternary sediments	Local	PPB
	BELLARINE	779724		Semi-permanent saline	GFS_01	Quaternary sediments	Local	
	BELLARINE	782617		Semi-permanent saline	GFS_01	Quaternary sediments	Local	
	BELLARINE	785597	Lake Connewarre State Wildlife Reserve	Semi-permanent saline	GFS_01	Quaternary sediments	Local	
	BELLARINE	790610	Lake Connewarre State Wildlife Reserve	Semi-permanent saline	GFS_01	Quaternary sediments	Local	
	BELLARINE	794614		Semi-permanent saline	GFS_01	Quaternary sediments	Local	
BELLARINE	824621		Semi-permanent saline	GFS_01	Quaternary sediments	Local		
BELLARINE	858616		Semi-permanent saline	GFS_01	Quaternary sediments	Local		
BELLARINE	862618		Semi-permanent saline	GFS_01	Quaternary sediments	Local		
BELLARINE	866614		Semi-permanent saline	GFS_01	Quaternary sediments	Local		

Bioregion	Landscape zone	Wetland No.	Wetland Name	Category	GFS No.	GFS Description	GFS System	Ramsar site
Otway Plain	BELLARINE	870609		Semi-permanent saline	GFS_01	Quaternary sediments	Local	
	BELLARINE	873621		Semi-permanent saline	GFS_01	Quaternary sediments	Local	
	BELLARINE	876611		Semi-permanent saline	GFS_01	Quaternary sediments	Local	
	BELLARINE	876614		Semi-permanent saline	GFS_01	Quaternary sediments	Local	
	BELLARINE	881621		Semi-permanent saline	GFS_01	Quaternary sediments	Local	
	BELLARINE	885604		Semi-permanent saline	GFS_01	Quaternary sediments	Local	
	BELLARINE	900620		Semi-permanent saline	GFS_01	Quaternary sediments	Local	
	BELLARINE	993740		Semi-permanent saline	GFS_01	Quaternary sediments	Local	
	BELLARINE	970752		Sewerage pond	GFS_01	Quaternary sediments	Local	
	BELLARINE	693690		Shallow freshwater marsh	GFS_01	Quaternary sediments	Local	
	BELLARINE	695696		Shallow freshwater marsh	GFS_01	Quaternary sediments	Local	
	BELLARINE	710682		Shallow freshwater marsh	GFS_01	Quaternary sediments	Local	
	BELLARINE	717682		Shallow freshwater marsh	GFS_01	Quaternary sediments	Local	
	BELLARINE	752694		Shallow freshwater marsh	GFS_01	Quaternary sediments	Local	
	BELLARINE	846614		Shallow freshwater marsh	GFS_01	Quaternary sediments	Local	
	BELLARINE	814610	Lake Connewarre State Wildlife Reserve	Permanent saline	GFS_01	Quaternary sediments	Local	
	BELLARINE	957654	Swan Bay & Swan Island	Permanent saline	GFS_01	Quaternary sediments	Local	
	BELLARINE	919628		Semi-permanent saline	GFS_01	Quaternary sediments	Local	
	BELLARINE	949670		Semi-permanent saline	GFS_01	Quaternary sediments	Local	
	BELLARINE	980699		Semi-permanent saline	GFS_01	Quaternary sediments	Local	
	BELLARINE	986686		Semi-permanent saline	GFS_01	Quaternary sediments	Local	
	BELLARINE	990683		Semi-permanent saline	GFS_01	Quaternary sediments	Local	
	BELLARINE	594679		Permanent open freshwater	GFS_05	Gerangamete marls (outcrop)	Local	
	BELLARINE	604664		Permanent open freshwater	GFS_05	Gerangamete marls (outcrop)	Local	
	BELLARINE	611664		Permanent open freshwater	GFS_05	Gerangamete marls (outcrop)	Local	
	BELLARINE	619659		Permanent open freshwater	GFS_05	Gerangamete marls (outcrop)	Local	
	BELLARINE	646693		Permanent open freshwater	GFS_05	Gerangamete marls (outcrop)	Local	
	BELLARINE	647700		Permanent open freshwater	GFS_05	Gerangamete marls (outcrop)	Local	
	BELLARINE	539669		Permanent open freshwater	GFS_06	Otway Group - Barrabool Hills (outcrop)	Local	
	BELLARINE	851701		Freshwater meadow	GFS_10	Pliocene sands (outcrop)	Intermediate	
BELLARINE	641701		Permanent open freshwater	GFS_10	Pliocene sands (outcrop)	Intermediate		
BELLARINE	788678		Permanent open freshwater	GFS_10	Pliocene sands (outcrop)	Intermediate		
BELLARINE	805681		Permanent open freshwater	GFS_10	Pliocene sands (outcrop)	Intermediate		

Bioregion	Landscape zone	Wetland No.	Wetland Name	Category	GFS No.	GFS Description	GFS System	Ramsar site	
Otway Plain	BELLARINE	838692		Permanent open freshwater	GFS_10	Pliocene sands (outcrop)	Intermediate		
	BELLARINE	843648		Permanent open freshwater	GFS_10	Pliocene sands (outcrop)	Intermediate		
	BELLARINE	850631		Permanent open freshwater	GFS_10	Pliocene sands (outcrop)	Intermediate		
	BELLARINE	854652		Permanent open freshwater	GFS_10	Pliocene sands (outcrop)	Intermediate		
	BELLARINE	856626		Permanent open freshwater	GFS_10	Pliocene sands (outcrop)	Intermediate		
	BELLARINE	881636		Permanent open freshwater	GFS_10	Pliocene sands (outcrop)	Intermediate		
	BELLARINE	886726		Permanent open freshwater	GFS_10	Pliocene sands (outcrop)	Intermediate		
	BELLARINE	887711		Permanent open freshwater	GFS_10	Pliocene sands (outcrop)	Intermediate		
	BELLARINE	902639		Permanent open freshwater	GFS_10	Pliocene sands (outcrop)	Intermediate		
	BELLARINE	919705		Permanent open freshwater	GFS_10	Pliocene sands (outcrop)	Intermediate		
	BELLARINE	936758		Permanent open freshwater	GFS_10	Pliocene sands (outcrop)	Intermediate		
	BELLARINE	886627		Semi-permanent saline	GFS_10	Pliocene sands (outcrop)	Intermediate		
	BELLARINE	853670		Permanent open freshwater					
	BELLARINE	738647	Lake Connewarre State Wildlife Reserve	Permanent saline					PPB
	BELLARINE	738656		Semi-permanent saline					PPB
	BELLARINE	814614		Semi-permanent saline					
	BELLARINE	893610		Semi-permanent saline					
	GELLIBRAND	924105		Freshwater meadow	GFS_01	Quaternary sediments	Local		
	GELLIBRAND	929108		Freshwater meadow	GFS_01	Quaternary sediments	Local		
	GELLIBRAND	935106		Freshwater meadow	GFS_01	Quaternary sediments	Local		
	GELLIBRAND	940107		Freshwater meadow	GFS_01	Quaternary sediments	Local		
	GELLIBRAND	944111		Freshwater meadow	GFS_01	Quaternary sediments	Local		
	GELLIBRAND	947111		Freshwater meadow	GFS_01	Quaternary sediments	Local		
	GELLIBRAND	952109		Freshwater meadow	GFS_01	Quaternary sediments	Local		
	GELLIBRAND	956111		Freshwater meadow	GFS_01	Quaternary sediments	Local		
	GELLIBRAND	958113		Freshwater meadow	GFS_01	Quaternary sediments	Local		
	GELLIBRAND	203320		Permanent open freshwater	GFS_01	Quaternary sediments	Local		
	GELLIBRAND	963243		Permanent open freshwater	GFS_01	Quaternary sediments	Local		
	GELLIBRAND	868156		Semi-permanent saline	GFS_01	Quaternary sediments	Local		
	GELLIBRAND	872151		Semi-permanent saline	GFS_01	Quaternary sediments	Local		
	GELLIBRAND	882144	Princetown Wetlands	Semi-permanent saline	GFS_01	Quaternary sediments	Local		
	GELLIBRAND	889141	Princetown Wetlands	Shallow freshwater marsh	GFS_01	Quaternary sediments	Local		
	GELLIBRAND	892125		Shallow freshwater marsh	GFS_01	Quaternary sediments	Local		
GELLIBRAND	892128		Shallow freshwater marsh	GFS_01	Quaternary sediments	Local			

Bioregion	Landscape zone	Wetland No.	Wetland Name	Category	GFS No.	GFS Description	GFS System	Ramsar site
Otway Plain	GELLIBRAND	900126		Shallow freshwater marsh	GFS_01	Quaternary sediments	Local	
	GELLIBRAND	902118		Shallow freshwater marsh	GFS_01	Quaternary sediments	Local	
	GELLIBRAND	903115		Shallow freshwater marsh	GFS_01	Quaternary sediments	Local	
	GELLIBRAND	912110		Shallow freshwater marsh	GFS_01	Quaternary sediments	Local	
	GELLIBRAND	914106		Shallow freshwater marsh	GFS_01	Quaternary sediments	Local	
	GELLIBRAND	919107		Shallow freshwater marsh	GFS_01	Quaternary sediments	Local	
	GELLIBRAND	922107		Shallow freshwater marsh	GFS_01	Quaternary sediments	Local	
	GELLIBRAND	924107		Shallow freshwater marsh	GFS_01	Quaternary sediments	Local	
	GELLIBRAND	926108		Shallow freshwater marsh	GFS_01	Quaternary sediments	Local	
	GELLIBRAND	970214		Shallow freshwater marsh	GFS_01	Quaternary sediments	Local	
	GELLIBRAND	876140	Princetown Wetlands	Permanent saline	GFS_01	Quaternary sediments	Local	
	GELLIBRAND	910176		Permanent open freshwater	GFS_04	Heytesbury marl (outcrop)	Local	
	GELLIBRAND	931214		Permanent open freshwater	GFS_04	Heytesbury marl (outcrop)	Local	
	GELLIBRAND	242422		Permanent open freshwater	GFS_09	Otway Group - Otway Ranges (outcrop)	Local	
	GELLIBRAND	140426		Permanent open freshwater	GFS_10	Pliocene sands (outcrop)	Intermediate	
	GELLIBRAND	158443		Permanent open freshwater	GFS_10	Pliocene sands (outcrop)	Intermediate	
	MID BARWON	643730		Permanent open freshwater	GFS_06	Otway Group - Barrabool Hills (outcrop)	Local	
	MID BARWON	460690		Permanent open freshwater	GFS_10	Pliocene sands (outcrop)	Intermediate	
	STONY RISES	335521		Freshwater meadow	GFS_01	Quaternary sediments	Local	
	STONY RISES	230488		Permanent open freshwater	GFS_01	Quaternary sediments	Local	
	STONY RISES	330523		Permanent open freshwater	GFS_01	Quaternary sediments	Local	
	STONY RISES	194577		Shallow freshwater marsh	GFS_01	Quaternary sediments	Local	
	STONY RISES	328521		Shallow freshwater marsh	GFS_01	Quaternary sediments	Local	
	STONY RISES	318523		Permanent open freshwater	GFS_05	Gerangamete marls (outcrop)	Local	
	STONY RISES	323470		Permanent open freshwater	GFS_05	Gerangamete marls (outcrop)	Local	
	STONY RISES	350476		Permanent open freshwater	GFS_05	Gerangamete marls (outcrop)	Local	
	STONY RISES	351481		Permanent open freshwater	GFS_05	Gerangamete marls (outcrop)	Local	
	STONY RISES	353472		Permanent open freshwater	GFS_05	Gerangamete marls (outcrop)	Local	
	STONY RISES	200442		Permanent open freshwater	GFS_09	Otway Group - Otway Ranges (outcrop)	Local	
	STONY RISES	202456		Permanent open freshwater	GFS_09	Otway Group - Otway Ranges (outcrop)	Local	
	STONY RISES	92445		Permanent open freshwater	GFS_10	Pliocene sands (outcrop)	Intermediate	
	STONY RISES	136454		Permanent open freshwater	GFS_10	Pliocene sands (outcrop)	Intermediate	
STONY RISES	143447		Permanent open freshwater	GFS_10	Pliocene sands (outcrop)	Intermediate		
STONY RISES	143484		Permanent open freshwater	GFS_10	Pliocene sands (outcrop)	Intermediate		

Bioregion	Landscape zone	Wetland No.	Wetland Name	Category	GFS No.	GFS Description	GFS System	Ramsar site
Otway Plain	STONY RISES	149465		Permanent open freshwater	GFS_10	Pliocene sands (outcrop)	Intermediate	
	STONY RISES	163486		Permanent open freshwater	GFS_10	Pliocene sands (outcrop)	Intermediate	
	STONY RISES	189543		Permanent open freshwater	GFS_14	Volcanic plains basalt (outcrop)	Regional	
	STONY RISES	123513		Permanent open freshwater	GFS_17	Dilwyn Formation (outcrop)	Regional	
	STONY RISES	180438		Permanent open freshwater	GFS_17	Dilwyn Formation (outcrop)	Regional	
	STONY RISES	198483		Permanent open freshwater	GFS_17	Dilwyn Formation (outcrop)	Regional	
	STONY RISES	254489		Permanent open freshwater	GFS_17	Dilwyn Formation (outcrop)	Regional	
	STONY RISES	270477		Permanent open freshwater	GFS_17	Dilwyn Formation (outcrop)	Regional	
	STONY RISES	173560		Shallow freshwater marsh	GFS_17	Dilwyn Formation (outcrop)	Regional	
	STONY RISES	268572		Permanent open freshwater				
	THOMPSONS	491604		Deep freshwater marsh	GFS_01	Quaternary sediments	Local	
	THOMPSONS	426584		Freshwater meadow	GFS_01	Quaternary sediments	Local	
	THOMPSONS	438409		Permanent open freshwater	GFS_01	Quaternary sediments	Local	
	THOMPSONS	458567		Permanent open freshwater	GFS_01	Quaternary sediments	Local	
	THOMPSONS	510460		Permanent open freshwater	GFS_01	Quaternary sediments	Local	
	THOMPSONS	510463		Permanent open freshwater	GFS_01	Quaternary sediments	Local	
	THOMPSONS	539469		Permanent open freshwater	GFS_01	Quaternary sediments	Local	
	THOMPSONS	699604		Permanent open freshwater	GFS_01	Quaternary sediments	Local	
	THOMPSONS	543450		Permanent saline	GFS_01	Quaternary sediments	Local	
	THOMPSONS	704580		Semi-permanent saline	GFS_01	Quaternary sediments	Local	
	THOMPSONS	728589		Semi-permanent saline	GFS_01	Quaternary sediments	Local	
	THOMPSONS	523452		Permanent open freshwater	GFS_05	Gerangamete marls (outcrop)	Local	
	THOMPSONS	543511		Permanent open freshwater	GFS_05	Gerangamete marls (outcrop)	Local	
	THOMPSONS	561479		Permanent open freshwater	GFS_05	Gerangamete marls (outcrop)	Local	
	THOMPSONS	629516		Permanent open freshwater	GFS_05	Gerangamete marls (outcrop)	Local	
	THOMPSONS	553454		Sewerage pond	GFS_05	Gerangamete marls (outcrop)	Local	
	THOMPSONS	514668		Permanent open freshwater	GFS_06	Otway Group - Barrabool Hills (outcrop)	Local	
	THOMPSONS	526656		Permanent open freshwater	GFS_06	Otway Group - Barrabool Hills (outcrop)	Local	
	THOMPSONS	435585		Freshwater meadow	GFS_10	Pliocene sands (outcrop)	Intermediate	
	THOMPSONS	509713		Freshwater meadow	GFS_10	Pliocene sands (outcrop)	Intermediate	
	THOMPSONS	414528		Permanent open freshwater	GFS_10	Pliocene sands (outcrop)	Intermediate	
	THOMPSONS	418550		Permanent open freshwater	GFS_10	Pliocene sands (outcrop)	Intermediate	
	THOMPSONS	434542		Permanent open freshwater	GFS_10	Pliocene sands (outcrop)	Intermediate	
	THOMPSONS	454490		Permanent open freshwater	GFS_10	Pliocene sands (outcrop)	Intermediate	

Bioregion	Landscape zone	Wetland No.	Wetland Name	Category	GFS No.	GFS Description	GFS System	Ramsar site	
Otway Plain	THOMPSONS	457518		Permanent open freshwater	GFS_10	Pliocene sands (outcrop)	Intermediate		
		522544		Permanent open freshwater	GFS_10	Pliocene sands (outcrop)	Intermediate		
		528579		Permanent open freshwater	GFS_10	Pliocene sands (outcrop)	Intermediate		
		535553		Permanent open freshwater	GFS_10	Pliocene sands (outcrop)	Intermediate		
		537551		Permanent open freshwater	GFS_10	Pliocene sands (outcrop)	Intermediate		
		553535		Permanent open freshwater	GFS_10	Pliocene sands (outcrop)	Intermediate		
		561583		Permanent open freshwater	GFS_10	Pliocene sands (outcrop)	Intermediate		
		589498		Permanent open freshwater	GFS_10	Pliocene sands (outcrop)	Intermediate		
		621582		Permanent open freshwater	GFS_10	Pliocene sands (outcrop)	Intermediate		
		633573		Permanent open freshwater	GFS_10	Pliocene sands (outcrop)	Intermediate		
		646548		Permanent open freshwater	GFS_10	Pliocene sands (outcrop)	Intermediate		
		453568		Permanent open freshwater	GFS_17	Dilwyn Formation (outcrop)	Regional		
		409580		Permanent open freshwater					
		469610		Semi-permanent saline					
		UPPER BARWON	443546		Freshwater meadow	GFS_01	Quaternary sediments	Local	
			449547		Freshwater meadow	GFS_01	Quaternary sediments	Local	
			251443		Permanent open freshwater	GFS_01	Quaternary sediments	Local	
			342380		Permanent open freshwater	GFS_01	Quaternary sediments	Local	
			348390		Permanent open freshwater	GFS_01	Quaternary sediments	Local	
			448457		Permanent open freshwater	GFS_01	Quaternary sediments	Local	
			458411		Permanent open freshwater	GFS_01	Quaternary sediments	Local	
			462441		Permanent open freshwater	GFS_01	Quaternary sediments	Local	
			472502		Permanent open freshwater	GFS_01	Quaternary sediments	Local	
			538543		Permanent open freshwater	GFS_01	Quaternary sediments	Local	
			551544		Permanent open freshwater	GFS_01	Quaternary sediments	Local	
			596576		Permanent open freshwater	GFS_01	Quaternary sediments	Local	
			496467		Shallow freshwater marsh	GFS_01	Quaternary sediments	Local	
			379521		Freshwater meadow	GFS_05	Gerangamete marls (outcrop)	Local	
			348513		Permanent open freshwater	GFS_05	Gerangamete marls (outcrop)	Local	
			373506		Permanent open freshwater	GFS_05	Gerangamete marls (outcrop)	Local	
			375474		Permanent open freshwater	GFS_05	Gerangamete marls (outcrop)	Local	
			379519		Permanent open freshwater	GFS_05	Gerangamete marls (outcrop)	Local	
	408482		Permanent open freshwater	GFS_05	Gerangamete marls (outcrop)	Local			
	422415		Permanent open freshwater	GFS_05	Gerangamete marls (outcrop)	Local			

Bioregion	Landscape zone	Wetland No.	Wetland Name	Category	GFS No.	GFS Description	GFS System	Ramsar site
Otway Plain	UPPER BARWON	450510		Permanent open freshwater	GFS_05	Gerangamete marls (outcrop)	Local	
		455500		Permanent open freshwater	GFS_05	Gerangamete marls (outcrop)	Local	
		495536		Permanent open freshwater	GFS_05	Gerangamete marls (outcrop)	Local	
		496442		Permanent open freshwater	GFS_05	Gerangamete marls (outcrop)	Local	
		525544		Permanent open freshwater	GFS_05	Gerangamete marls (outcrop)	Local	
		596551		Permanent open freshwater	GFS_05	Gerangamete marls (outcrop)	Local	
		366516		Shallow freshwater marsh	GFS_05	Gerangamete marls (outcrop)	Local	
		455569		Semi-permanent saline	GFS_10	Pliocene sands (outcrop)	Intermediate	
		465581		Permanent open freshwater	GFS_14	Volcanic plains basalt (outcrop)	Regional	
		342443		Permanent open freshwater	GFS_17	Dilwyn Formation (outcrop)	Regional	
		344461		Permanent open freshwater	GFS_17	Dilwyn Formation (outcrop)	Regional	
		482511		Permanent open freshwater	GFS_17	Dilwyn Formation (outcrop)	Regional	
		596516		Permanent open freshwater	GFS_17	Dilwyn Formation (outcrop)	Regional	
		600520		Permanent open freshwater				
Otway Ranges	AIRE	142052	Lower Aire River Wetlands	Permanent open freshwater				
		149035		Permanent open freshwater				
		155045		Permanent open freshwater				
	GELLIBRAND	308238		Permanent open freshwater				
		334224		Permanent open freshwater				
	OTWAY COAST	312050		Shallow freshwater marsh	GFS_01	Quaternary sediments	Local	
		304041		Permanent open freshwater	GFS_09	Otway Group - Otway Ranges (outcrop)	Local	
		564303		Permanent open freshwater	GFS_09	Otway Group - Otway Ranges (outcrop)	Local	
	UPPER BARWON	404291		Permanent open freshwater	GFS_09	Otway Group - Otway Ranges (outcrop)	Local	
		370312		Permanent open freshwater				
Victorian Volcanic Plain	BELLARINE	710662		Freshwater meadow	GFS_01	Quaternary sediments	Local	
		923734		Permanent open freshwater	GFS_08	Older volcanics (outcrop)	Local	
		932757		Permanent open freshwater	GFS_08	Older volcanics (outcrop)	Local	
		690612		Shallow freshwater marsh	GFS_14	Volcanic plains basalt (outcrop)	Regional	
		733642	Lake Connewarre State Wildlife Reserve	Permanent saline				
		770658		Permanent saline				
		782634		Semi-permanent saline				
	CURDIES	915578		Deep freshwater marsh	GFS_01	Quaternary sediments	Local	
977609			Deep freshwater marsh	GFS_01	Quaternary sediments	Local		

Bioregion	Landscape zone	Wetland No.	Wetland Name	Category	GFS No.	GFS Description	GFS System	Ramsar site
Victorian Volcanic Plain	CURDIES	980613		Deep freshwater marsh	GFS_01	Quaternary sediments	Local	
		897598		Permanent open freshwater	GFS_01	Quaternary sediments	Local	
		912585		Shallow freshwater marsh	GFS_01	Quaternary sediments	Local	
		917574		Shallow freshwater marsh	GFS_01	Quaternary sediments	Local	
		918562		Shallow freshwater marsh	GFS_01	Quaternary sediments	Local	
		918592		Shallow freshwater marsh	GFS_01	Quaternary sediments	Local	
		934598		Shallow freshwater marsh	GFS_01	Quaternary sediments	Local	
		935564		Shallow freshwater marsh	GFS_01	Quaternary sediments	Local	
		935575		Shallow freshwater marsh	GFS_01	Quaternary sediments	Local	
		940596		Shallow freshwater marsh	GFS_01	Quaternary sediments	Local	
		983629		Shallow freshwater marsh	GFS_01	Quaternary sediments	Local	
		984610		Shallow freshwater marsh	GFS_01	Quaternary sediments	Local	
		936567		Deep freshwater marsh	GFS_02	Scoria cones and stony rises (outcrop)	Local	
		12512	Stonyford-Bungador Wetlands	Freshwater meadow	GFS_02	Scoria cones and stony rises (outcrop)	Local	
		958552		Freshwater meadow	GFS_02	Scoria cones and stony rises (outcrop)	Local	
		989615		Freshwater meadow	GFS_02	Scoria cones and stony rises (outcrop)	Local	
		865618		Permanent open freshwater	GFS_02	Scoria cones and stony rises (outcrop)	Local	
		866612		Permanent open freshwater	GFS_02	Scoria cones and stony rises (outcrop)	Local	
		4528	Stonyford-Bungador Wetlands	Shallow freshwater marsh	GFS_02	Scoria cones and stony rises (outcrop)	Local	
		9519		Shallow freshwater marsh	GFS_02	Scoria cones and stony rises (outcrop)	Local	
		12517		Shallow freshwater marsh	GFS_02	Scoria cones and stony rises (outcrop)	Local	
		914583		Shallow freshwater marsh	GFS_02	Scoria cones and stony rises (outcrop)	Local	
		920581		Shallow freshwater marsh	GFS_02	Scoria cones and stony rises (outcrop)	Local	
		923591		Shallow freshwater marsh	GFS_02	Scoria cones and stony rises (outcrop)	Local	
		925586		Shallow freshwater marsh	GFS_02	Scoria cones and stony rises (outcrop)	Local	
		926565		Shallow freshwater marsh	GFS_02	Scoria cones and stony rises (outcrop)	Local	
		927562		Shallow freshwater marsh	GFS_02	Scoria cones and stony rises (outcrop)	Local	
		927567		Shallow freshwater marsh	GFS_02	Scoria cones and stony rises (outcrop)	Local	
		927586		Shallow freshwater marsh	GFS_02	Scoria cones and stony rises (outcrop)	Local	
		929594		Shallow freshwater marsh	GFS_02	Scoria cones and stony rises (outcrop)	Local	
		931587		Shallow freshwater marsh	GFS_02	Scoria cones and stony rises (outcrop)	Local	
		963584		Shallow freshwater marsh	GFS_02	Scoria cones and stony rises (outcrop)	Local	
		980607		Shallow freshwater marsh	GFS_02	Scoria cones and stony rises (outcrop)	Local	



Bioregion	Landscape zone	Wetland No.	Wetland Name	Category	GFS No.	GFS Description	GFS System	Ramsar site
Victorian Volcanic Plain	CURDIES	725435		Freshwater meadow	GFS_14	Volcanic plains basalt (outcrop)	Regional	
		810586		Permanent open freshwater	GFS_14	Volcanic plains basalt (outcrop)	Regional	
		814558		Permanent open freshwater	GFS_14	Volcanic plains basalt (outcrop)	Regional	
		858635		Permanent open freshwater				
		950604		Permanent open freshwater				
	HOVELLS	764873		Freshwater meadow	GFS_01	Quaternary sediments	Local	PPB
		698977		Permanent open freshwater	GFS_01	Quaternary sediments	Local	
		725908		Permanent open freshwater	GFS_01	Quaternary sediments	Local	
		757889		Permanent open freshwater	GFS_01	Quaternary sediments	Local	
		725835	Werribee-Avalon Area	Permanent saline	GFS_01	Quaternary sediments	Local	
		729850		Semi-permanent saline	GFS_01	Quaternary sediments	Local	
		730843	Werribee-Avalon Area	Semi-permanent saline	GFS_01	Quaternary sediments	Local	
		805814	Werribee-Avalon Area	Semi-permanent saline	GFS_01	Quaternary sediments	Local	
		814817	Werribee-Avalon Area	Semi-permanent saline	GFS_01	Quaternary sediments	Local	
		604025		Freshwater meadow	GFS_02	Scoria cones and stony rises (outcrop)	Local	
		779857		Deep freshwater marsh	GFS_14	Volcanic plains basalt (outcrop)	Regional	PPB
		717840		Freshwater meadow	GFS_14	Volcanic plains basalt (outcrop)	Regional	
		772852		Freshwater meadow	GFS_14	Volcanic plains basalt (outcrop)	Regional	PPB
		773840		Freshwater meadow	GFS_14	Volcanic plains basalt (outcrop)	Regional	
		781860		Freshwater meadow	GFS_14	Volcanic plains basalt (outcrop)	Regional	PPB
		782852		Freshwater meadow	GFS_14	Volcanic plains basalt (outcrop)	Regional	PPB
		784853		Freshwater meadow	GFS_14	Volcanic plains basalt (outcrop)	Regional	PPB
		799842		Freshwater meadow	GFS_14	Volcanic plains basalt (outcrop)	Regional	
		601970		Permanent open freshwater	GFS_14	Volcanic plains basalt (outcrop)	Regional	
		637927		Permanent open freshwater	GFS_14	Volcanic plains basalt (outcrop)	Regional	
		650961		Permanent open freshwater	GFS_14	Volcanic plains basalt (outcrop)	Regional	
		653780		Permanent open freshwater	GFS_14	Volcanic plains basalt (outcrop)	Regional	
		653835		Permanent open freshwater	GFS_14	Volcanic plains basalt (outcrop)	Regional	
		654890		Permanent open freshwater	GFS_14	Volcanic plains basalt (outcrop)	Regional	
		662987		Permanent open freshwater	GFS_14	Volcanic plains basalt (outcrop)	Regional	
		664968		Permanent open freshwater	GFS_14	Volcanic plains basalt (outcrop)	Regional	
		677922		Permanent open freshwater	GFS_14	Volcanic plains basalt (outcrop)	Regional	
680953		Permanent open freshwater	GFS_14	Volcanic plains basalt (outcrop)	Regional			
771900		Permanent open freshwater	GFS_14	Volcanic plains basalt (outcrop)	Regional			

Bioregion	Landscape zone	Wetland No.	Wetland Name	Category	GFS No.	GFS Description	GFS System	Ramsar site
Victorian Volcanic Plain	HOVELLS	801825		Semi-permanent saline	GFS_14	Volcanic plains basalt (outcrop)	Regional	
		759843		Shallow freshwater marsh	GFS_14	Volcanic plains basalt (outcrop)	Regional	
		776831		Shallow freshwater marsh	GFS_14	Volcanic plains basalt (outcrop)	Regional	
		802838		Freshwater meadow	GFS_14	Volcanic plains basalt (outcrop)	Regional	
		778898		Permanent open freshwater	GFS_14	Volcanic plains basalt (outcrop)	Regional	
	LEIGH	375844		Permanent open freshwater	GFS_01	Quaternary sediments	Local	
		616889		Permanent open freshwater	GFS_01	Quaternary sediments	Local	
		619873		Permanent open freshwater	GFS_01	Quaternary sediments	Local	
		623910		Permanent open freshwater	GFS_01	Quaternary sediments	Local	
		543122		Permanent open freshwater	GFS_03	Highlands gravel caps (outcrop)	Local	
		554104		Permanent open freshwater	GFS_03	Highlands gravel caps (outcrop)	Local	
		556097		Permanent open freshwater	GFS_03	Highlands gravel caps (outcrop)	Local	
		387078		Freshwater meadow	GFS_12	Palaeozoic sedimentary rocks (outcrop)	Intermediate	
		575096		Permanent open freshwater	GFS_12	Palaeozoic sedimentary rocks (outcrop)	Intermediate	
		554016		Freshwater meadow	GFS_13	Central Highlands volcanics (outcrop)	Intermediate	
		362090		Permanent open freshwater	GFS_13	Central Highlands volcanics (outcrop)	Intermediate	
		376099		Permanent open freshwater	GFS_13	Central Highlands volcanics (outcrop)	Intermediate	
		449308		Permanent open freshwater	GFS_13	Central Highlands volcanics (outcrop)	Intermediate	
		480299		Permanent open freshwater	GFS_13	Central Highlands volcanics (outcrop)	Intermediate	
		496338		Permanent open freshwater	GFS_13	Central Highlands volcanics (outcrop)	Intermediate	
		558977		Permanent open freshwater	GFS_13	Central Highlands volcanics (outcrop)	Intermediate	
		568100		Permanent open freshwater	GFS_13	Central Highlands volcanics (outcrop)	Intermediate	
		568104		Permanent open freshwater	GFS_13	Central Highlands volcanics (outcrop)	Intermediate	
		604114		Permanent open freshwater	GFS_13	Central Highlands volcanics (outcrop)	Intermediate	
		606088		Permanent open freshwater	GFS_13	Central Highlands volcanics (outcrop)	Intermediate	
		607098		Permanent open freshwater	GFS_13	Central Highlands volcanics (outcrop)	Intermediate	
		607104		Permanent open freshwater	GFS_13	Central Highlands volcanics (outcrop)	Intermediate	
		613167		Permanent open freshwater	GFS_13	Central Highlands volcanics (outcrop)	Intermediate	
		614135		Permanent open freshwater	GFS_13	Central Highlands volcanics (outcrop)	Intermediate	
		640139		Permanent open freshwater	GFS_13	Central Highlands volcanics (outcrop)	Intermediate	
		544110		Shallow freshwater marsh	GFS_13	Central Highlands volcanics (outcrop)	Intermediate	
		366938		Permanent open freshwater	GFS_14	Volcanic plains basalt (outcrop)	Regional	
		562959		Permanent open freshwater	GFS_14	Volcanic plains basalt (outcrop)	Regional	
LISMORE	104205	Widderin Swamps	Deep freshwater marsh	GFS_01	Quaternary sediments	Local		

Bioregion	Landscape zone	Wetland No.	Wetland Name	Category	GFS No.	GFS Description	GFS System	Ramsar site
Victorian Volcanic Plain	LISMORE	4794		Freshwater meadow	GFS_01	Quaternary sediments	Local	
		10896		Freshwater meadow	GFS_01	Quaternary sediments	Local	
		29794		Freshwater meadow	GFS_01	Quaternary sediments	Local	
		47840		Freshwater meadow	GFS_01	Quaternary sediments	Local	
		62871		Freshwater meadow	GFS_01	Quaternary sediments	Local	
		231823		Freshwater meadow	GFS_01	Quaternary sediments	Local	
		250809		Freshwater meadow	GFS_01	Quaternary sediments	Local	
		268864		Freshwater meadow	GFS_01	Quaternary sediments	Local	
		274854		Freshwater meadow	GFS_01	Quaternary sediments	Local	
		890875		Freshwater meadow	GFS_01	Quaternary sediments	Local	
		892882		Freshwater meadow	GFS_01	Quaternary sediments	Local	
		905890		Freshwater meadow	GFS_01	Quaternary sediments	Local	
		920868		Freshwater meadow	GFS_01	Quaternary sediments	Local	
		928830		Freshwater meadow	GFS_01	Quaternary sediments	Local	
		931820		Freshwater meadow	GFS_01	Quaternary sediments	Local	
		935894		Freshwater meadow	GFS_01	Quaternary sediments	Local	
		942899		Freshwater meadow	GFS_01	Quaternary sediments	Local	
		953856		Freshwater meadow	GFS_01	Quaternary sediments	Local	
		957858		Freshwater meadow	GFS_01	Quaternary sediments	Local	
		964853		Freshwater meadow	GFS_01	Quaternary sediments	Local	
		965784		Freshwater meadow	GFS_01	Quaternary sediments	Local	
		969779		Freshwater meadow	GFS_01	Quaternary sediments	Local	
		972174		Freshwater meadow	GFS_01	Quaternary sediments	Local	
		974174		Freshwater meadow	GFS_01	Quaternary sediments	Local	
		988850		Freshwater meadow	GFS_01	Quaternary sediments	Local	
		996878		Freshwater meadow	GFS_01	Quaternary sediments	Local	
		258884		Permanent open freshwater	GFS_01	Quaternary sediments	Local	
		923865		Permanent open freshwater	GFS_01	Quaternary sediments	Local	
		942799	Lake Milangil	Permanent saline	GFS_01	Quaternary sediments	Local	
		5803	Kooraweera Lakes	Semi-permanent saline	GFS_01	Quaternary sediments	Local	
32791		Semi-permanent saline	GFS_01	Quaternary sediments	Local			
33783		Semi-permanent saline	GFS_01	Quaternary sediments	Local			
88752		Semi-permanent saline	GFS_01	Quaternary sediments	Local			
130856		Semi-permanent saline	GFS_01	Quaternary sediments	Local	WDL		

Bioregion	Landscape zone	Wetland No.	Wetland Name	Category	GFS No.	GFS Description	GFS System	Ramsar site
Victorian Volcanic Plain	LISMORE	142854		Semi-permanent saline	GFS_01	Quaternary sediments	Local	
		944809		Semi-permanent saline	GFS_01	Quaternary sediments	Local	
		949816		Semi-permanent saline	GFS_01	Quaternary sediments	Local	
		952800		Semi-permanent saline	GFS_01	Quaternary sediments	Local	
		958819		Semi-permanent saline	GFS_01	Quaternary sediments	Local	
		962814		Semi-permanent saline	GFS_01	Quaternary sediments	Local	
		6838		Shallow freshwater marsh	GFS_01	Quaternary sediments	Local	
		29902		Shallow freshwater marsh	GFS_01	Quaternary sediments	Local	
		36122		Shallow freshwater marsh	GFS_01	Quaternary sediments	Local	
		59800		Shallow freshwater marsh	GFS_01	Quaternary sediments	Local	
		150862		Shallow freshwater marsh	GFS_01	Quaternary sediments	Local	
		169850		Shallow freshwater marsh	GFS_01	Quaternary sediments	Local	
		266849		Shallow freshwater marsh	GFS_01	Quaternary sediments	Local	
		274849		Shallow freshwater marsh	GFS_01	Quaternary sediments	Local	
		283854		Shallow freshwater marsh	GFS_01	Quaternary sediments	Local	
		900837		Shallow freshwater marsh	GFS_01	Quaternary sediments	Local	
		910847		Shallow freshwater marsh	GFS_01	Quaternary sediments	Local	
		913837		Shallow freshwater marsh	GFS_01	Quaternary sediments	Local	
		935898		Shallow freshwater marsh	GFS_01	Quaternary sediments	Local	
		940831		Shallow freshwater marsh	GFS_01	Quaternary sediments	Local	
		940905		Shallow freshwater marsh	GFS_01	Quaternary sediments	Local	
		943862		Shallow freshwater marsh	GFS_01	Quaternary sediments	Local	
		957906		Shallow freshwater marsh	GFS_01	Quaternary sediments	Local	
		959126	Banongill Network	Shallow freshwater marsh	GFS_01	Quaternary sediments	Local	
		980902		Shallow freshwater marsh	GFS_01	Quaternary sediments	Local	
		883905		Freshwater meadow	GFS_01	Quaternary sediments	Local	
		82179		Freshwater meadow	GFS_02	Scoria cones and stony rises (outcrop)	Local	
		84190		Freshwater meadow	GFS_02	Scoria cones and stony rises (outcrop)	Local	
		936911		Freshwater meadow	GFS_02	Scoria cones and stony rises (outcrop)	Local	
		961090		Freshwater meadow	GFS_02	Scoria cones and stony rises (outcrop)	Local	
		961122	Banongill Network	Freshwater meadow	GFS_02	Scoria cones and stony rises (outcrop)	Local	
		963088		Freshwater meadow	GFS_02	Scoria cones and stony rises (outcrop)	Local	
		984161		Freshwater meadow	GFS_02	Scoria cones and stony rises (outcrop)	Local	
		985157		Freshwater meadow	GFS_02	Scoria cones and stony rises (outcrop)	Local	

Bioregion	Landscape zone	Wetland No.	Wetland Name	Category	GFS No.	GFS Description	GFS System	Ramsar site	
Victorian Volcanic Plain	LISMORE	985168		Freshwater meadow	GFS_02	Scoria cones and stony rises (outcrop)	Local		
		22094		Permanent open freshwater	GFS_02	Scoria cones and stony rises (outcrop)	Local		
		78172		Permanent open freshwater	GFS_02	Scoria cones and stony rises (outcrop)	Local		
		932003		Permanent open freshwater	GFS_02	Scoria cones and stony rises (outcrop)	Local		
		973146		Permanent open freshwater	GFS_02	Scoria cones and stony rises (outcrop)	Local		
		8143		Shallow freshwater marsh	GFS_02	Scoria cones and stony rises (outcrop)	Local		
		30894		Shallow freshwater marsh	GFS_02	Scoria cones and stony rises (outcrop)	Local		
		32140		Shallow freshwater marsh	GFS_02	Scoria cones and stony rises (outcrop)	Local		
		35158		Shallow freshwater marsh	GFS_02	Scoria cones and stony rises (outcrop)	Local		
		46167		Shallow freshwater marsh	GFS_02	Scoria cones and stony rises (outcrop)	Local		
		956093		Shallow freshwater marsh	GFS_02	Scoria cones and stony rises (outcrop)	Local		
		957068		Shallow freshwater marsh	GFS_02	Scoria cones and stony rises (outcrop)	Local		
		962134	Banongill Network	962134	Shallow freshwater marsh	GFS_02	Scoria cones and stony rises (outcrop)	Local	
		966122		966122	Shallow freshwater marsh	GFS_02	Scoria cones and stony rises (outcrop)	Local	
		966132		966132	Shallow freshwater marsh	GFS_02	Scoria cones and stony rises (outcrop)	Local	
		968137		968137	Shallow freshwater marsh	GFS_02	Scoria cones and stony rises (outcrop)	Local	
		973933		973933	Shallow freshwater marsh	GFS_02	Scoria cones and stony rises (outcrop)	Local	
		988151		Shallow freshwater marsh	GFS_02	Scoria cones and stony rises (outcrop)	Local		
		73956		Freshwater meadow	GFS_07	Granitic rocks (outcrop)	Local		
		12980		Permanent open freshwater	GFS_07	Granitic rocks (outcrop)	Local		
		24997		Permanent open freshwater	GFS_07	Granitic rocks (outcrop)	Local		
		18846		Freshwater meadow	GFS_10	Pliocene sands (outcrop)	Intermediate		
		48925		Freshwater meadow	GFS_10	Pliocene sands (outcrop)	Intermediate		
		49835		Freshwater meadow	GFS_10	Pliocene sands (outcrop)	Intermediate		
		56820		Freshwater meadow	GFS_10	Pliocene sands (outcrop)	Intermediate		
		84785		Freshwater meadow	GFS_10	Pliocene sands (outcrop)	Intermediate		
		88779		Freshwater meadow	GFS_10	Pliocene sands (outcrop)	Intermediate		
		275864		Freshwater meadow	GFS_10	Pliocene sands (outcrop)	Intermediate		
		970823		Freshwater meadow	GFS_10	Pliocene sands (outcrop)	Intermediate		
		40940		Permanent open freshwater	GFS_10	Pliocene sands (outcrop)	Intermediate		
		41989		Permanent open freshwater	GFS_10	Pliocene sands (outcrop)	Intermediate		
		42961		Permanent open freshwater	GFS_10	Pliocene sands (outcrop)	Intermediate		
		46971		Permanent open freshwater	GFS_10	Pliocene sands (outcrop)	Intermediate		
		61936		Permanent open freshwater	GFS_10	Pliocene sands (outcrop)	Intermediate		

Bioregion	Landscape zone	Wetland No.	Wetland Name	Category	GFS No.	GFS Description	GFS System	Ramsar site
Victorian Volcanic Plain	LISMORE	3816		Semi-permanent saline	GFS_10	Pliocene sands (outcrop)	Intermediate	
		12804	Kooraweera Lakes	Shallow freshwater marsh	GFS_10	Pliocene sands (outcrop)	Intermediate	
		64885		Shallow freshwater marsh	GFS_10	Pliocene sands (outcrop)	Intermediate	
		972842		Shallow freshwater marsh	GFS_10	Pliocene sands (outcrop)	Intermediate	
		1088		Deep freshwater marsh	GFS_13	Central Highlands volcanics (outcrop)	Intermediate	
		99180	Widderin Swamps	Deep freshwater marsh	GFS_13	Central Highlands volcanics (outcrop)	Intermediate	
		927089		Deep freshwater marsh	GFS_13	Central Highlands volcanics (outcrop)	Intermediate	
		23032		Freshwater meadow	GFS_13	Central Highlands volcanics (outcrop)	Intermediate	
		24029		Freshwater meadow	GFS_13	Central Highlands volcanics (outcrop)	Intermediate	
		895049		Freshwater meadow	GFS_13	Central Highlands volcanics (outcrop)	Intermediate	
		942153		Freshwater meadow	GFS_13	Central Highlands volcanics (outcrop)	Intermediate	
		943038		Freshwater meadow	GFS_13	Central Highlands volcanics (outcrop)	Intermediate	
		22984		Permanent open freshwater	GFS_13	Central Highlands volcanics (outcrop)	Intermediate	
		35011		Permanent open freshwater	GFS_13	Central Highlands volcanics (outcrop)	Intermediate	
		40043		Permanent open freshwater	GFS_13	Central Highlands volcanics (outcrop)	Intermediate	
		67072		Permanent open freshwater	GFS_13	Central Highlands volcanics (outcrop)	Intermediate	
		71976		Permanent open freshwater	GFS_13	Central Highlands volcanics (outcrop)	Intermediate	
		102065		Permanent open freshwater	GFS_13	Central Highlands volcanics (outcrop)	Intermediate	
		139106		Permanent open freshwater	GFS_13	Central Highlands volcanics (outcrop)	Intermediate	
		932149		Permanent open freshwater	GFS_13	Central Highlands volcanics (outcrop)	Intermediate	
		962011		Permanent open freshwater	GFS_13	Central Highlands volcanics (outcrop)	Intermediate	
		52167		Shallow freshwater marsh	GFS_13	Central Highlands volcanics (outcrop)	Intermediate	
		953084		Shallow freshwater marsh	GFS_13	Central Highlands volcanics (outcrop)	Intermediate	
		986063		Shallow freshwater marsh	GFS_13	Central Highlands volcanics (outcrop)	Intermediate	
		83215	Widderin Swamps	Freshwater meadow	GFS_13	Central Highlands volcanics (outcrop)	Intermediate	
		884024		Freshwater meadow	GFS_13	Central Highlands volcanics (outcrop)	Intermediate	
		210895		Freshwater meadow	GFS_14	Volcanic plains basalt (outcrop)	Regional	
		227901		Freshwater meadow	GFS_14	Volcanic plains basalt (outcrop)	Regional	
		924800		Freshwater meadow	GFS_14	Volcanic plains basalt (outcrop)	Regional	
		992952		Permanent saline	GFS_14	Volcanic plains basalt (outcrop)	Regional	
		915995		Semi-permanent saline	GFS_14	Volcanic plains basalt (outcrop)	Regional	
		38768	Lake Terangpom	Permanent open freshwater				
		90887		Permanent open freshwater				
		121897		Permanent open freshwater				

Bioregion	Landscape zone	Wetland No.	Wetland Name	Category	GFS No.	GFS Description	GFS System	Ramsar site	
Victorian Volcanic Plain	LISMORE	907998		Permanent open freshwater					
		920009		Permanent open freshwater					
		988822	Kooraweera Lakes	Permanent open freshwater					
		994938		Permanent open freshwater					
		29789		Permanent saline					
		64793		Permanent saline					
		94823	Lake Gnarpurt	Permanent saline					
		98852	Lake Gnarpurt	Permanent saline					
		120710	Lake Corangamite	Permanent saline					
		255870		Permanent saline					
		976816	Kooraweera Lakes	Permanent saline					
		5810	Kooraweera Lakes	Semi-permanent saline					
		8805	Kooraweera Lakes	Semi-permanent saline					
		16803	Kooraweera Lakes	Semi-permanent saline					
		24805	Kooraweera Lakes	Semi-permanent saline					
		29800	Kooraweera Lakes	Semi-permanent saline					
		50766		Semi-permanent saline					
		74780		Semi-permanent saline					
		79769		Semi-permanent saline					
		79776		Semi-permanent saline					
		88758		Semi-permanent saline					
		200824	Lake Corangamite	Semi-permanent saline					
		984812	Kooraweera Lakes	Semi-permanent saline					
		991812	Kooraweera Lakes	Semi-permanent saline					
		999809	Kooraweera Lakes	Semi-permanent saline					
		930010		Shallow freshwater marsh					
		991922		Shallow freshwater marsh					
		992926		Shallow freshwater marsh					
		MID BARWON	494788		Deep freshwater marsh	GFS_01	Quaternary sediments	Local	
			498769		Deep freshwater marsh	GFS_01	Quaternary sediments	Local	
			500790		Deep freshwater marsh	GFS_01	Quaternary sediments	Local	
			505779		Deep freshwater marsh	GFS_01	Quaternary sediments	Local	
			505786		Deep freshwater marsh	GFS_01	Quaternary sediments	Local	
	612640			Deep freshwater marsh	GFS_01	Quaternary sediments	Local		

Bioregion	Landscape zone	Wetland No.	Wetland Name	Category	GFS No.	GFS Description	GFS System	Ramsar site
Victorian Volcanic Plain	MID BARWON	619676		Deep freshwater marsh	GFS_01	Quaternary sediments	Local	
		620653		Deep freshwater marsh	GFS_01	Quaternary sediments	Local	
		622667		Deep freshwater marsh	GFS_01	Quaternary sediments	Local	
		622676		Deep freshwater marsh	GFS_01	Quaternary sediments	Local	
		374690		Freshwater meadow	GFS_01	Quaternary sediments	Local	
		381887		Freshwater meadow	GFS_01	Quaternary sediments	Local	
		397754		Freshwater meadow	GFS_01	Quaternary sediments	Local	
		402663		Freshwater meadow	GFS_01	Quaternary sediments	Local	
		435689		Freshwater meadow	GFS_01	Quaternary sediments	Local	
		451777		Freshwater meadow	GFS_01	Quaternary sediments	Local	
		453775		Freshwater meadow	GFS_01	Quaternary sediments	Local	
		568725		Freshwater meadow	GFS_01	Quaternary sediments	Local	
		586676		Freshwater meadow	GFS_01	Quaternary sediments	Local	
		377886		Permanent open freshwater	GFS_01	Quaternary sediments	Local	
		404852		Permanent open freshwater	GFS_01	Quaternary sediments	Local	
		407768		Permanent open freshwater	GFS_01	Quaternary sediments	Local	
		409850		Permanent open freshwater	GFS_01	Quaternary sediments	Local	
		413647		Permanent open freshwater	GFS_01	Quaternary sediments	Local	
		423831		Permanent open freshwater	GFS_01	Quaternary sediments	Local	
		425770		Permanent open freshwater	GFS_01	Quaternary sediments	Local	
		428637		Permanent open freshwater	GFS_01	Quaternary sediments	Local	
		549675		Permanent open freshwater	GFS_01	Quaternary sediments	Local	
		606694		Permanent open freshwater	GFS_01	Quaternary sediments	Local	
		579695		Semi-permanent saline	GFS_01	Quaternary sediments	Local	
		587693		Semi-permanent saline	GFS_01	Quaternary sediments	Local	
		595667		Semi-permanent saline	GFS_01	Quaternary sediments	Local	
		598678		Semi-permanent saline	GFS_01	Quaternary sediments	Local	
		616697		Semi-permanent saline	GFS_01	Quaternary sediments	Local	
		366892		Shallow freshwater marsh	GFS_01	Quaternary sediments	Local	
		370890		Shallow freshwater marsh	GFS_01	Quaternary sediments	Local	
		377881		Shallow freshwater marsh	GFS_01	Quaternary sediments	Local	
		380880		Shallow freshwater marsh	GFS_01	Quaternary sediments	Local	
		381883		Shallow freshwater marsh	GFS_01	Quaternary sediments	Local	
384882		Shallow freshwater marsh	GFS_01	Quaternary sediments	Local			



Bioregion	Landscape zone	Wetland No.	Wetland Name	Category	GFS No.	GFS Description	GFS System	Ramsar site
Victorian Volcanic Plain	MID BARWON	399653		Shallow freshwater marsh	GFS_01	Quaternary sediments	Local	
		401678		Shallow freshwater marsh	GFS_01	Quaternary sediments	Local	
		403657		Shallow freshwater marsh	GFS_01	Quaternary sediments	Local	
		446654		Shallow freshwater marsh	GFS_01	Quaternary sediments	Local	
		578676		Shallow freshwater marsh	GFS_01	Quaternary sediments	Local	
		587712		Shallow freshwater marsh	GFS_01	Quaternary sediments	Local	
		604716		Shallow freshwater marsh	GFS_02	Scoria cones and stony rises (outcrop)	Local	
		444635		Deep freshwater marsh	GFS_10	Pliocene sands (outcrop)	Intermediate	
		495804		Deep freshwater marsh	GFS_10	Pliocene sands (outcrop)	Intermediate	
		502819		Deep freshwater marsh	GFS_10	Pliocene sands (outcrop)	Intermediate	
		457842		Freshwater meadow	GFS_10	Pliocene sands (outcrop)	Intermediate	
		459852		Permanent open freshwater	GFS_10	Pliocene sands (outcrop)	Intermediate	
		466920		Permanent open freshwater	GFS_10	Pliocene sands (outcrop)	Intermediate	
		488873		Permanent open freshwater	GFS_10	Pliocene sands (outcrop)	Intermediate	
		511855		Permanent open freshwater	GFS_10	Pliocene sands (outcrop)	Intermediate	
		458839		Shallow freshwater marsh	GFS_10	Pliocene sands (outcrop)	Intermediate	
		435953		Permanent open freshwater	GFS_13	Central Highlands volcanics (outcrop)	Intermediate	
		430835		Deep freshwater marsh	GFS_14	Volcanic plains basalt (outcrop)	Regional	
		371896		Freshwater meadow	GFS_14	Volcanic plains basalt (outcrop)	Regional	
		452650		Freshwater meadow	GFS_14	Volcanic plains basalt (outcrop)	Regional	
		456648		Freshwater meadow	GFS_14	Volcanic plains basalt (outcrop)	Regional	
		563625		Freshwater meadow	GFS_14	Volcanic plains basalt (outcrop)	Regional	
		564619		Freshwater meadow	GFS_14	Volcanic plains basalt (outcrop)	Regional	
		583707		Freshwater meadow	GFS_14	Volcanic plains basalt (outcrop)	Regional	
		599704		Freshwater meadow	GFS_14	Volcanic plains basalt (outcrop)	Regional	
		378909		Permanent open freshwater	GFS_14	Volcanic plains basalt (outcrop)	Regional	
		396609		Permanent open freshwater	GFS_14	Volcanic plains basalt (outcrop)	Regional	
		398898		Permanent open freshwater	GFS_14	Volcanic plains basalt (outcrop)	Regional	
		421896		Permanent open freshwater	GFS_14	Volcanic plains basalt (outcrop)	Regional	
		423913		Permanent open freshwater	GFS_14	Volcanic plains basalt (outcrop)	Regional	
		446867		Permanent open freshwater	GFS_14	Volcanic plains basalt (outcrop)	Regional	
		448936		Permanent open freshwater	GFS_14	Volcanic plains basalt (outcrop)	Regional	
		455673		Permanent open freshwater	GFS_14	Volcanic plains basalt (outcrop)	Regional	
481764		Permanent open freshwater	GFS_14	Volcanic plains basalt (outcrop)	Regional			

Bioregion	Landscape zone	Wetland No.	Wetland Name	Category	GFS No.	GFS Description	GFS System	Ramsar site	
Victorian Volcanic Plain	MID BARWON	482943		Permanent open freshwater	GFS_14	Volcanic plains basalt (outcrop)	Regional		
		502739		Permanent open freshwater	GFS_14	Volcanic plains basalt (outcrop)	Regional		
		573689		Semi-permanent saline	GFS_14	Volcanic plains basalt (outcrop)	Regional		
		561616		Shallow freshwater marsh	GFS_14	Volcanic plains basalt (outcrop)	Regional		
		577704		Shallow freshwater marsh	GFS_14	Volcanic plains basalt (outcrop)	Regional		
		430617		Deep freshwater marsh					
		432649		Deep freshwater marsh					
		579686		Semi-permanent saline					
		589688		Semi-permanent saline					
		592671		Semi-permanent saline					
		599690		Semi-permanent saline					
		436625		Shallow freshwater marsh					
	MOORABOOL	613884		Freshwater meadow	GFS_01	Quaternary sediments	Local		
		550874		Permanent open freshwater	GFS_01	Quaternary sediments	Local		
		556826		Shallow freshwater marsh	GFS_01	Quaternary sediments	Local		
		540855		Permanent open freshwater	GFS_05	Gerangamete marls (outcrop)	Local		
		597808		Permanent open freshwater	GFS_10	Pliocene sands (outcrop)	Intermediate		
		614779		Permanent open freshwater	GFS_10	Pliocene sands (outcrop)	Intermediate		
		543826		Freshwater meadow	GFS_14	Volcanic plains basalt (outcrop)	Regional		
		582820		Freshwater meadow	GFS_14	Volcanic plains basalt (outcrop)	Regional		
		617902		Freshwater meadow	GFS_14	Volcanic plains basalt (outcrop)	Regional		
		627876		Freshwater meadow	GFS_14	Volcanic plains basalt (outcrop)	Regional		
		627890		Freshwater meadow	GFS_14	Volcanic plains basalt (outcrop)	Regional		
		582010		Permanent open freshwater	GFS_14	Volcanic plains basalt (outcrop)	Regional		
		591824		Permanent open freshwater	GFS_14	Volcanic plains basalt (outcrop)	Regional		
		MURDEDUKE	395889		Deep freshwater marsh	GFS_01	Quaternary sediments	Local	
	405882			Deep freshwater marsh	GFS_01	Quaternary sediments	Local		
	559947			Deep freshwater marsh	GFS_01	Quaternary sediments	Local		
	404728			Freshwater meadow	GFS_01	Quaternary sediments	Local		
	409729			Freshwater meadow	GFS_01	Quaternary sediments	Local		
	423732			Freshwater meadow	GFS_01	Quaternary sediments	Local		
	423758			Freshwater meadow	GFS_01	Quaternary sediments	Local		
	425750			Freshwater meadow	GFS_01	Quaternary sediments	Local		
426750		Freshwater meadow	GFS_01	Quaternary sediments	Local				

Bioregion	Landscape zone	Wetland No.	Wetland Name	Category	GFS No.	GFS Description	GFS System	Ramsar site
Victorian Volcanic Plain	MURDEDUKE	428742		Freshwater meadow	GFS_01	Quaternary sediments	Local	
		429752		Freshwater meadow	GFS_01	Quaternary sediments	Local	
		448900		Freshwater meadow	GFS_01	Quaternary sediments	Local	
		452896		Freshwater meadow	GFS_01	Quaternary sediments	Local	
		475880		Freshwater meadow	GFS_01	Quaternary sediments	Local	
		478826		Freshwater meadow	GFS_01	Quaternary sediments	Local	
		567730		Freshwater meadow	GFS_01	Quaternary sediments	Local	
		599743		Freshwater meadow	GFS_01	Quaternary sediments	Local	
		393898		Permanent open freshwater	GFS_01	Quaternary sediments	Local	
		442864		Permanent open freshwater	GFS_01	Quaternary sediments	Local	
		474714		Permanent open freshwater	GFS_01	Quaternary sediments	Local	
		498699		Permanent open freshwater	GFS_01	Quaternary sediments	Local	
		580779		Permanent open freshwater	GFS_01	Quaternary sediments	Local	
		535640		Semi-permanent saline	GFS_01	Quaternary sediments	Local	
		407750		Shallow freshwater marsh	GFS_01	Quaternary sediments	Local	
		417758		Shallow freshwater marsh	GFS_01	Quaternary sediments	Local	
		420753		Shallow freshwater marsh	GFS_01	Quaternary sediments	Local	
		429841		Shallow freshwater marsh	GFS_01	Quaternary sediments	Local	
		559738		Shallow freshwater marsh	GFS_01	Quaternary sediments	Local	
		592733		Shallow freshwater marsh	GFS_01	Quaternary sediments	Local	
		435707		Freshwater meadow	GFS_02	Scoria cones and stony rises (outcrop)	Local	
		470687		Freshwater meadow	GFS_02	Scoria cones and stony rises (outcrop)	Local	
		606733		Freshwater meadow	GFS_02	Scoria cones and stony rises (outcrop)	Local	
		446669		Permanent open freshwater	GFS_02	Scoria cones and stony rises (outcrop)	Local	
		436758		Freshwater meadow	GFS_10	Pliocene sands (outcrop)	Intermediate	
		532997		Permanent open freshwater	GFS_13	Central Highlands volcanics (outcrop)	Intermediate	
		536031		Permanent open freshwater	GFS_13	Central Highlands volcanics (outcrop)	Intermediate	
		549077		Permanent open freshwater	GFS_13	Central Highlands volcanics (outcrop)	Intermediate	
		437916		Deep freshwater marsh	GFS_14	Volcanic plains basalt (outcrop)	Regional	
		430904		Freshwater meadow	GFS_14	Volcanic plains basalt (outcrop)	Regional	
		444903		Freshwater meadow	GFS_14	Volcanic plains basalt (outcrop)	Regional	
		466844		Freshwater meadow	GFS_14	Volcanic plains basalt (outcrop)	Regional	
		474874		Freshwater meadow	GFS_14	Volcanic plains basalt (outcrop)	Regional	
		496940		Freshwater meadow	GFS_14	Volcanic plains basalt (outcrop)	Regional	

Bioregion	Landscape zone	Wetland No.	Wetland Name	Category	GFS No.	GFS Description	GFS System	Ramsar site	
Victorian Volcanic Plain	MURDEDUKE	545740		Freshwater meadow	GFS_14	Volcanic plains basalt (outcrop)	Regional		
		461830		Permanent open freshwater	GFS_14	Volcanic plains basalt (outcrop)	Regional		
		494983		Permanent open freshwater	GFS_14	Volcanic plains basalt (outcrop)	Regional		
		499910		Permanent open freshwater	GFS_14	Volcanic plains basalt (outcrop)	Regional		
		500913		Permanent open freshwater	GFS_14	Volcanic plains basalt (outcrop)	Regional		
		513974		Permanent open freshwater	GFS_14	Volcanic plains basalt (outcrop)	Regional		
		520977		Permanent open freshwater	GFS_14	Volcanic plains basalt (outcrop)	Regional		
		525830		Permanent open freshwater	GFS_14	Volcanic plains basalt (outcrop)	Regional		
		592832		Permanent open freshwater	GFS_14	Volcanic plains basalt (outcrop)	Regional		
		416920		Shallow freshwater marsh	GFS_14	Volcanic plains basalt (outcrop)	Regional		
		557859		Shallow freshwater marsh	GFS_14	Volcanic plains basalt (outcrop)	Regional		
		615734		Shallow freshwater marsh	GFS_14	Volcanic plains basalt (outcrop)	Regional		
		585745		Deep freshwater marsh					
		494846		Permanent open freshwater					
		510028		Permanent open freshwater					
		515842		Permanent open freshwater					
		523849		Permanent open freshwater					
		527738		Permanent open freshwater					
		495829		Permanent saline					
		540707	Lake Murdeduke	Permanent saline					
		STONY RISES	13647		Deep freshwater marsh	GFS_01	Quaternary sediments	Local	
			90559		Deep freshwater marsh	GFS_01	Quaternary sediments	Local	
			236697		Deep freshwater marsh	GFS_01	Quaternary sediments	Local	
			368678		Deep freshwater marsh	GFS_01	Quaternary sediments	Local	
			415779		Deep freshwater marsh	GFS_01	Quaternary sediments	Local	
			4689		Freshwater meadow	GFS_01	Quaternary sediments	Local	
			12652		Freshwater meadow	GFS_01	Quaternary sediments	Local	
			15672		Freshwater meadow	GFS_01	Quaternary sediments	Local	
			19666		Freshwater meadow	GFS_01	Quaternary sediments	Local	
			22681		Freshwater meadow	GFS_01	Quaternary sediments	Local	
			87534		Freshwater meadow	GFS_01	Quaternary sediments	Local	
			158586		Freshwater meadow	GFS_01	Quaternary sediments	Local	
	168761		Freshwater meadow	GFS_01	Quaternary sediments	Local			
	177758		Freshwater meadow	GFS_01	Quaternary sediments	Local			

Bioregion	Landscape zone	Wetland No.	Wetland Name	Category	GFS No.	GFS Description	GFS System	Ramsar site
Victorian Volcanic Plain	STONY RISES	199758		Freshwater meadow	GFS_01	Quaternary sediments	Local	
		210769		Freshwater meadow	GFS_01	Quaternary sediments	Local	
		239753		Freshwater meadow	GFS_01	Quaternary sediments	Local	
		241578		Freshwater meadow	GFS_01	Quaternary sediments	Local	
		285763		Freshwater meadow	GFS_01	Quaternary sediments	Local	
		287756		Freshwater meadow	GFS_01	Quaternary sediments	Local	
		290761		Freshwater meadow	GFS_01	Quaternary sediments	Local	
		292605		Freshwater meadow	GFS_01	Quaternary sediments	Local	
		295604		Freshwater meadow	GFS_01	Quaternary sediments	Local	
		299697		Freshwater meadow	GFS_01	Quaternary sediments	Local	
		302744		Freshwater meadow	GFS_01	Quaternary sediments	Local	
		303750		Freshwater meadow	GFS_01	Quaternary sediments	Local	
		312667		Freshwater meadow	GFS_01	Quaternary sediments	Local	
		314607	Lower Lough Calvert & Lake Thurrumbong	Freshwater meadow	GFS_01	Quaternary sediments	Local	
		316630		Freshwater meadow	GFS_01	Quaternary sediments	Local	
		317598		Freshwater meadow	GFS_01	Quaternary sediments	Local	
		317678		Freshwater meadow	GFS_01	Quaternary sediments	Local	
		319751		Freshwater meadow	GFS_01	Quaternary sediments	Local	
		332709		Freshwater meadow	GFS_01	Quaternary sediments	Local	
		332734		Freshwater meadow	GFS_01	Quaternary sediments	Local	
		332755		Freshwater meadow	GFS_01	Quaternary sediments	Local	
		333718		Freshwater meadow	GFS_01	Quaternary sediments	Local	
		335709		Freshwater meadow	GFS_01	Quaternary sediments	Local	
		343830		Freshwater meadow	GFS_01	Quaternary sediments	Local	
		348672		Freshwater meadow	GFS_01	Quaternary sediments	Local	
		353671		Freshwater meadow	GFS_01	Quaternary sediments	Local	
		357681		Freshwater meadow	GFS_01	Quaternary sediments	Local	
		373746		Freshwater meadow	GFS_01	Quaternary sediments	Local	
		380790		Freshwater meadow	GFS_01	Quaternary sediments	Local	
		382782		Freshwater meadow	GFS_01	Quaternary sediments	Local	
		383717		Freshwater meadow	GFS_01	Quaternary sediments	Local	
		390822		Freshwater meadow	GFS_01	Quaternary sediments	Local	
		391754		Freshwater meadow	GFS_01	Quaternary sediments	Local	
		392715		Freshwater meadow	GFS_01	Quaternary sediments	Local	

Bioregion	Landscape zone	Wetland No.	Wetland Name	Category	GFS No.	GFS Description	GFS System	Ramsar site
Victorian Volcanic Plain	STONY RISES	393683		Freshwater meadow	GFS_01	Quaternary sediments	Local	
		395707		Freshwater meadow	GFS_01	Quaternary sediments	Local	
		399767		Freshwater meadow	GFS_01	Quaternary sediments	Local	
		400761		Freshwater meadow	GFS_01	Quaternary sediments	Local	
		402771		Freshwater meadow	GFS_01	Quaternary sediments	Local	
		406683		Freshwater meadow	GFS_01	Quaternary sediments	Local	
		422773		Freshwater meadow	GFS_01	Quaternary sediments	Local	
		893664		Freshwater meadow	GFS_01	Quaternary sediments	Local	
		923702		Freshwater meadow	GFS_01	Quaternary sediments	Local	
		930739		Freshwater meadow	GFS_01	Quaternary sediments	Local	
		945776		Freshwater meadow	GFS_01	Quaternary sediments	Local	
		960695		Freshwater meadow	GFS_01	Quaternary sediments	Local	
		967715		Freshwater meadow	GFS_01	Quaternary sediments	Local	
		972660		Freshwater meadow	GFS_01	Quaternary sediments	Local	
		983751		Freshwater meadow	GFS_01	Quaternary sediments	Local	
		987650		Freshwater meadow	GFS_01	Quaternary sediments	Local	
		996662		Freshwater meadow	GFS_01	Quaternary sediments	Local	
		435664		Permanent open freshwater	GFS_01	Quaternary sediments	Local	
		873638		Permanent open freshwater	GFS_01	Quaternary sediments	Local	
		876642		Permanent open freshwater	GFS_01	Quaternary sediments	Local	
		906712		Permanent open freshwater	GFS_01	Quaternary sediments	Local	
		986688		Permanent open freshwater	GFS_01	Quaternary sediments	Local	
		321805		Permanent saline	GFS_01	Quaternary sediments	Local	
		395780		Permanent saline	GFS_01	Quaternary sediments	Local	
		120657		Semi-permanent saline	GFS_01	Quaternary sediments	Local	
		123671		Semi-permanent saline	GFS_01	Quaternary sediments	Local	
		130690		Semi-permanent saline	GFS_01	Quaternary sediments	Local	
		134684		Semi-permanent saline	GFS_01	Quaternary sediments	Local	
		152654		Semi-permanent saline	GFS_01	Quaternary sediments	Local	
		168737		Semi-permanent saline	GFS_01	Quaternary sediments	Local	
		170728		Semi-permanent saline	GFS_01	Quaternary sediments	Local	
		199738		Semi-permanent saline	GFS_01	Quaternary sediments	Local	
201723		Semi-permanent saline	GFS_01	Quaternary sediments	Local			
204722		Semi-permanent saline	GFS_01	Quaternary sediments	Local			

Bioregion	Landscape zone	Wetland No.	Wetland Name	Category	GFS No.	GFS Description	GFS System	Ramsar site
Victorian Volcanic Plain	STONY RISES	205748		Semi-permanent saline	GFS_01	Quaternary sediments	Local	
		205753		Semi-permanent saline	GFS_01	Quaternary sediments	Local	
		206724		Semi-permanent saline	GFS_01	Quaternary sediments	Local	
		210747		Semi-permanent saline	GFS_01	Quaternary sediments	Local	
		211757		Semi-permanent saline	GFS_01	Quaternary sediments	Local	
		217738		Semi-permanent saline	GFS_01	Quaternary sediments	Local	
		217764		Semi-permanent saline	GFS_01	Quaternary sediments	Local	
		219730		Semi-permanent saline	GFS_01	Quaternary sediments	Local	
		221745		Semi-permanent saline	GFS_01	Quaternary sediments	Local	
		221759		Semi-permanent saline	GFS_01	Quaternary sediments	Local	
		226735		Semi-permanent saline	GFS_01	Quaternary sediments	Local	
		229748		Semi-permanent saline	GFS_01	Quaternary sediments	Local	
		231757		Semi-permanent saline	GFS_01	Quaternary sediments	Local	
		232725		Semi-permanent saline	GFS_01	Quaternary sediments	Local	
		233762		Semi-permanent saline	GFS_01	Quaternary sediments	Local	
		234765		Semi-permanent saline	GFS_01	Quaternary sediments	Local	
		235732		Semi-permanent saline	GFS_01	Quaternary sediments	Local	
		239717		Semi-permanent saline	GFS_01	Quaternary sediments	Local	
		239748		Semi-permanent saline	GFS_01	Quaternary sediments	Local	
		239757		Semi-permanent saline	GFS_01	Quaternary sediments	Local	
		241749		Semi-permanent saline	GFS_01	Quaternary sediments	Local	
		243698		Semi-permanent saline	GFS_01	Quaternary sediments	Local	
		246761		Semi-permanent saline	GFS_01	Quaternary sediments	Local	
		246788		Semi-permanent saline	GFS_01	Quaternary sediments	Local	
		250770		Semi-permanent saline	GFS_01	Quaternary sediments	Local	
		253777		Semi-permanent saline	GFS_01	Quaternary sediments	Local	
		258769		Semi-permanent saline	GFS_01	Quaternary sediments	Local	
		262770		Semi-permanent saline	GFS_01	Quaternary sediments	Local	
		262777		Semi-permanent saline	GFS_01	Quaternary sediments	Local	
		271737		Semi-permanent saline	GFS_01	Quaternary sediments	Local	
		271740		Semi-permanent saline	GFS_01	Quaternary sediments	Local	
		276666		Semi-permanent saline	GFS_01	Quaternary sediments	Local	
276703		Semi-permanent saline	GFS_01	Quaternary sediments	Local			
276743		Semi-permanent saline	GFS_01	Quaternary sediments	Local			

Bioregion	Landscape zone	Wetland No.	Wetland Name	Category	GFS No.	GFS Description	GFS System	Ramsar site
Victorian Volcanic Plain	STONY RISES	278685		Semi-permanent saline	GFS_01	Quaternary sediments	Local	
		278724		Semi-permanent saline	GFS_01	Quaternary sediments	Local	
		286708		Semi-permanent saline	GFS_01	Quaternary sediments	Local	
		299758		Semi-permanent saline	GFS_01	Quaternary sediments	Local	
		302636		Semi-permanent saline	GFS_01	Quaternary sediments	Local	
		303755		Semi-permanent saline	GFS_01	Quaternary sediments	Local	
		308750		Semi-permanent saline	GFS_01	Quaternary sediments	Local	
		308760		Semi-permanent saline	GFS_01	Quaternary sediments	Local	
		312797		Semi-permanent saline	GFS_01	Quaternary sediments	Local	
		314766		Semi-permanent saline	GFS_01	Quaternary sediments	Local	
		315717		Semi-permanent saline	GFS_01	Quaternary sediments	Local	
		315813		Semi-permanent saline	GFS_01	Quaternary sediments	Local	
		320720		Semi-permanent saline	GFS_01	Quaternary sediments	Local	
		321728		Semi-permanent saline	GFS_01	Quaternary sediments	Local	
		323740		Semi-permanent saline	GFS_01	Quaternary sediments	Local	
		330821		Semi-permanent saline	GFS_01	Quaternary sediments	Local	
		338829		Semi-permanent saline	GFS_01	Quaternary sediments	Local	
		339827		Semi-permanent saline	GFS_01	Quaternary sediments	Local	
		341657	Lower Lough Calvert &	Semi-permanent saline	GFS_01	Quaternary sediments	Local	
		348666	Lake Thurrumbong	Semi-permanent saline	GFS_01	Quaternary sediments	Local	
		344729	Middle Lough Calvert	Semi-permanent saline	GFS_01	Quaternary sediments	Local	
		347776	Upper Lough Calvert	Semi-permanent saline	GFS_01	Quaternary sediments	Local	
		347800		Semi-permanent saline	GFS_01	Quaternary sediments	Local	
		350799		Semi-permanent saline	GFS_01	Quaternary sediments	Local	
		362762	Upper Lough Calvert	Semi-permanent saline	GFS_01	Quaternary sediments	Local	
		391737		Semi-permanent saline	GFS_01	Quaternary sediments	Local	
		391788		Semi-permanent saline	GFS_01	Quaternary sediments	Local	
		922740		Semi-permanent saline	GFS_01	Quaternary sediments	Local	
		14693		Shallow freshwater marsh	GFS_01	Quaternary sediments	Local	
		40545	Stonyford-Bungador	Shallow freshwater marsh	GFS_01	Quaternary sediments	Local	
		40550	Wetlands	Shallow freshwater marsh	GFS_01	Quaternary sediments	Local	
		60545		Shallow freshwater marsh	GFS_01	Quaternary sediments	Local	
		145690		Shallow freshwater marsh	GFS_01	Quaternary sediments	Local	
153693		Shallow freshwater marsh	GFS_01	Quaternary sediments	Local			



Bioregion	Landscape zone	Wetland No.	Wetland Name	Category	GFS No.	GFS Description	GFS System	Ramsar site
Victorian Volcanic Plain	STONY RISES	164769		Shallow freshwater marsh	GFS_01	Quaternary sediments	Local	WDL
		169707		Shallow freshwater marsh	GFS_01	Quaternary sediments	Local	
		172739		Shallow freshwater marsh	GFS_01	Quaternary sediments	Local	
		172744		Shallow freshwater marsh	GFS_01	Quaternary sediments	Local	
		172761		Shallow freshwater marsh	GFS_01	Quaternary sediments	Local	
		173759		Shallow freshwater marsh	GFS_01	Quaternary sediments	Local	
		174738		Shallow freshwater marsh	GFS_01	Quaternary sediments	Local	
		174749		Shallow freshwater marsh	GFS_01	Quaternary sediments	Local	
		176735		Shallow freshwater marsh	GFS_01	Quaternary sediments	Local	
		178734		Shallow freshwater marsh	GFS_01	Quaternary sediments	Local	
		207760		Shallow freshwater marsh	GFS_01	Quaternary sediments	Local	
		224623		Shallow freshwater marsh	GFS_01	Quaternary sediments	Local	
		235771		Shallow freshwater marsh	GFS_01	Quaternary sediments	Local	
		269665		Shallow freshwater marsh	GFS_01	Quaternary sediments	Local	
		275619		Shallow freshwater marsh	GFS_01	Quaternary sediments	Local	
		283754		Shallow freshwater marsh	GFS_01	Quaternary sediments	Local	
		293608		Shallow freshwater marsh	GFS_01	Quaternary sediments	Local	
		310756		Shallow freshwater marsh	GFS_01	Quaternary sediments	Local	
		318705		Shallow freshwater marsh	GFS_01	Quaternary sediments	Local	
		320815		Shallow freshwater marsh	GFS_01	Quaternary sediments	Local	
		321711		Shallow freshwater marsh	GFS_01	Quaternary sediments	Local	
		321798		Shallow freshwater marsh	GFS_01	Quaternary sediments	Local	
		322761		Shallow freshwater marsh	GFS_01	Quaternary sediments	Local	
		323619	Lower Lough Calvert & Lake Thurrumbong	Shallow freshwater marsh	GFS_01	Quaternary sediments	Local	
		325708		Shallow freshwater marsh	GFS_01	Quaternary sediments	Local	
		326754		Shallow freshwater marsh	GFS_01	Quaternary sediments	Local	
		331748		Shallow freshwater marsh	GFS_01	Quaternary sediments	Local	
		352676		Shallow freshwater marsh	GFS_01	Quaternary sediments	Local	
		380808		Shallow freshwater marsh	GFS_01	Quaternary sediments	Local	
		386806		Shallow freshwater marsh	GFS_01	Quaternary sediments	Local	
		398772		Shallow freshwater marsh	GFS_01	Quaternary sediments	Local	
		400772		Shallow freshwater marsh	GFS_01	Quaternary sediments	Local	
		431666		Shallow freshwater marsh	GFS_01	Quaternary sediments	Local	

Bioregion	Landscape zone	Wetland No.	Wetland Name	Category	GFS No.	GFS Description	GFS System	Ramsar site
Victorian Volcanic Plain	STONY RISES	931767		Shallow freshwater marsh	GFS_01	Quaternary sediments	Local	
		19524	Stonyford-Bungador Wetlands	Deep freshwater marsh	GFS_02	Scoria cones and stony rises (outcrop)	Local	
		22522		Deep freshwater marsh	GFS_02	Scoria cones and stony rises (outcrop)	Local	
		27515		Deep freshwater marsh	GFS_02	Scoria cones and stony rises (outcrop)	Local	
		39524		Freshwater meadow	GFS_02	Scoria cones and stony rises (outcrop)	Local	
		43587		Deep freshwater marsh	GFS_02	Scoria cones and stony rises (outcrop)	Local	
		71598		Deep freshwater marsh	GFS_02	Scoria cones and stony rises (outcrop)	Local	
		94527		Deep freshwater marsh	GFS_02	Scoria cones and stony rises (outcrop)	Local	
		157671		Deep freshwater marsh	GFS_02	Scoria cones and stony rises (outcrop)	Local	
		164687		Deep freshwater marsh	GFS_02	Scoria cones and stony rises (outcrop)	Local	
		165689		Deep freshwater marsh	GFS_02	Scoria cones and stony rises (outcrop)	Local	
		169664		Deep freshwater marsh	GFS_02	Scoria cones and stony rises (outcrop)	Local	
		171662		Deep freshwater marsh	GFS_02	Scoria cones and stony rises (outcrop)	Local	
		174661		Deep freshwater marsh	GFS_02	Scoria cones and stony rises (outcrop)	Local	
		233697		Deep freshwater marsh	GFS_02	Scoria cones and stony rises (outcrop)	Local	
		254703		Deep freshwater marsh	GFS_02	Scoria cones and stony rises (outcrop)	Local	
		261651		Deep freshwater marsh	GFS_02	Scoria cones and stony rises (outcrop)	Local	
		11659		Freshwater meadow	GFS_02	Scoria cones and stony rises (outcrop)	Local	
		40660		Freshwater meadow	GFS_02	Scoria cones and stony rises (outcrop)	Local	
		90539		Freshwater meadow	GFS_02	Scoria cones and stony rises (outcrop)	Local	
		92555		Freshwater meadow	GFS_02	Scoria cones and stony rises (outcrop)	Local	
		146651		Freshwater meadow	GFS_02	Scoria cones and stony rises (outcrop)	Local	
		157572		Freshwater meadow	GFS_02	Scoria cones and stony rises (outcrop)	Local	
		158576		Freshwater meadow	GFS_02	Scoria cones and stony rises (outcrop)	Local	
		166590		Freshwater meadow	GFS_02	Scoria cones and stony rises (outcrop)	Local	
		168590		Freshwater meadow	GFS_02	Scoria cones and stony rises (outcrop)	Local	
		169589		Freshwater meadow	GFS_02	Scoria cones and stony rises (outcrop)	Local	
		170656		Freshwater meadow	GFS_02	Scoria cones and stony rises (outcrop)	Local	
		170695		Freshwater meadow	GFS_02	Scoria cones and stony rises (outcrop)	Local	
		171590		Freshwater meadow	GFS_02	Scoria cones and stony rises (outcrop)	Local	
		174588		Freshwater meadow	GFS_02	Scoria cones and stony rises (outcrop)	Local	
		176694		Freshwater meadow	GFS_02	Scoria cones and stony rises (outcrop)	Local	
178702	Freshwater meadow	GFS_02		Scoria cones and stony rises (outcrop)	Local			
181755	Freshwater meadow	GFS_02	Scoria cones and stony rises (outcrop)	Local				

Bioregion	Landscape zone	Wetland No.	Wetland Name	Category	GFS No.	GFS Description	GFS System	Ramsar site
Victorian Volcanic Plain	STONY RISES	182752		Freshwater meadow	GFS_02	Scoria cones and stony rises (outcrop)	Local	
		184657		Freshwater meadow	GFS_02	Scoria cones and stony rises (outcrop)	Local	
		184704		Freshwater meadow	GFS_02	Scoria cones and stony rises (outcrop)	Local	
		184756		Freshwater meadow	GFS_02	Scoria cones and stony rises (outcrop)	Local	
		188753		Freshwater meadow	GFS_02	Scoria cones and stony rises (outcrop)	Local	
		188756		Freshwater meadow	GFS_02	Scoria cones and stony rises (outcrop)	Local	
		193732		Freshwater meadow	GFS_02	Scoria cones and stony rises (outcrop)	Local	
		195739		Freshwater meadow	GFS_02	Scoria cones and stony rises (outcrop)	Local	
		196595		Freshwater meadow	GFS_02	Scoria cones and stony rises (outcrop)	Local	
		204577		Freshwater meadow	GFS_02	Scoria cones and stony rises (outcrop)	Local	
		212731		Freshwater meadow	GFS_02	Scoria cones and stony rises (outcrop)	Local	
		212741		Freshwater meadow	GFS_02	Scoria cones and stony rises (outcrop)	Local	
		213729		Freshwater meadow	GFS_02	Scoria cones and stony rises (outcrop)	Local	
		219588		Freshwater meadow	GFS_02	Scoria cones and stony rises (outcrop)	Local	
		219600		Freshwater meadow	GFS_02	Scoria cones and stony rises (outcrop)	Local	
		222607		Freshwater meadow	GFS_02	Scoria cones and stony rises (outcrop)	Local	
		223591		Freshwater meadow	GFS_02	Scoria cones and stony rises (outcrop)	Local	
		226579		Freshwater meadow	GFS_02	Scoria cones and stony rises (outcrop)	Local	
		236576		Freshwater meadow	GFS_02	Scoria cones and stony rises (outcrop)	Local	
		241615		Freshwater meadow	GFS_02	Scoria cones and stony rises (outcrop)	Local	
		249728		Freshwater meadow	GFS_02	Scoria cones and stony rises (outcrop)	Local	
		255626		Freshwater meadow	GFS_02	Scoria cones and stony rises (outcrop)	Local	
		259724		Freshwater meadow	GFS_02	Scoria cones and stony rises (outcrop)	Local	
		262625		Freshwater meadow	GFS_02	Scoria cones and stony rises (outcrop)	Local	
		264723		Freshwater meadow	GFS_02	Scoria cones and stony rises (outcrop)	Local	
		274762		Freshwater meadow	GFS_02	Scoria cones and stony rises (outcrop)	Local	
		275697		Freshwater meadow	GFS_02	Scoria cones and stony rises (outcrop)	Local	
		280650		Freshwater meadow	GFS_02	Scoria cones and stony rises (outcrop)	Local	
		940741		Freshwater meadow	GFS_02	Scoria cones and stony rises (outcrop)	Local	
		22708		Permanent open freshwater	GFS_02	Scoria cones and stony rises (outcrop)	Local	
		944690		Permanent open freshwater	GFS_02	Scoria cones and stony rises (outcrop)	Local	
		971737		Permanent open freshwater	GFS_02	Scoria cones and stony rises (outcrop)	Local	
		189627		Permanent saline	GFS_02	Scoria cones and stony rises (outcrop)	Local	
190629		Permanent saline	GFS_02	Scoria cones and stony rises (outcrop)	Local			

Bioregion	Landscape zone	Wetland No.	Wetland Name	Category	GFS No.	GFS Description	GFS System	Ramsar site
Victorian Volcanic Plain	STONY RISES	182631	Red Rock Lakes & The Basins	Freshwater meadow	GFS_02	Scoria cones and stony rises (outcrop)	Local	
		114648		Semi-permanent saline	GFS_02	Scoria cones and stony rises (outcrop)	Local	
		118685		Semi-permanent saline	GFS_02	Scoria cones and stony rises (outcrop)	Local	
		120683		Semi-permanent saline	GFS_02	Scoria cones and stony rises (outcrop)	Local	
		123684		Semi-permanent saline	GFS_02	Scoria cones and stony rises (outcrop)	Local	
		145659		Semi-permanent saline	GFS_02	Scoria cones and stony rises (outcrop)	Local	
		146676		Semi-permanent saline	GFS_02	Scoria cones and stony rises (outcrop)	Local	
		178748		Semi-permanent saline	GFS_02	Scoria cones and stony rises (outcrop)	Local	
		190727		Semi-permanent saline	GFS_02	Scoria cones and stony rises (outcrop)	Local	
		192742		Semi-permanent saline	GFS_02	Scoria cones and stony rises (outcrop)	Local	
		196722		Semi-permanent saline	GFS_02	Scoria cones and stony rises (outcrop)	Local	
		196750		Semi-permanent saline	GFS_02	Scoria cones and stony rises (outcrop)	Local	
		197752		Semi-permanent saline	GFS_02	Scoria cones and stony rises (outcrop)	Local	
		202736		Semi-permanent saline	GFS_02	Scoria cones and stony rises (outcrop)	Local	
		205735		Semi-permanent saline	GFS_02	Scoria cones and stony rises (outcrop)	Local	
		208736		Semi-permanent saline	GFS_02	Scoria cones and stony rises (outcrop)	Local	
		208739		Semi-permanent saline	GFS_02	Scoria cones and stony rises (outcrop)	Local	
		210724		Semi-permanent saline	GFS_02	Scoria cones and stony rises (outcrop)	Local	
		211751		Semi-permanent saline	GFS_02	Scoria cones and stony rises (outcrop)	Local	
		212736		Semi-permanent saline	GFS_02	Scoria cones and stony rises (outcrop)	Local	
		212742		Semi-permanent saline	GFS_02	Scoria cones and stony rises (outcrop)	Local	
		213721		Semi-permanent saline	GFS_02	Scoria cones and stony rises (outcrop)	Local	
		217741		Semi-permanent saline	GFS_02	Scoria cones and stony rises (outcrop)	Local	
		219726		Semi-permanent saline	GFS_02	Scoria cones and stony rises (outcrop)	Local	
		220735		Semi-permanent saline	GFS_02	Scoria cones and stony rises (outcrop)	Local	
		220753		Semi-permanent saline	GFS_02	Scoria cones and stony rises (outcrop)	Local	
		221731		Semi-permanent saline	GFS_02	Scoria cones and stony rises (outcrop)	Local	
		233743		Semi-permanent saline	GFS_02	Scoria cones and stony rises (outcrop)	Local	
		236741		Semi-permanent saline	GFS_02	Scoria cones and stony rises (outcrop)	Local	
		237738		Semi-permanent saline	GFS_02	Scoria cones and stony rises (outcrop)	Local	
		237741		Semi-permanent saline	GFS_02	Scoria cones and stony rises (outcrop)	Local	
		238739		Semi-permanent saline	GFS_02	Scoria cones and stony rises (outcrop)	Local	
241692		Semi-permanent saline	GFS_02	Scoria cones and stony rises (outcrop)	Local			

Bioregion	Landscape zone	Wetland No.	Wetland Name	Category	GFS No.	GFS Description	GFS System	Ramsar site
Victorian Volcanic Plain	STONY RISES	242731		Semi-permanent saline	GFS_02	Scoria cones and stony rises (outcrop)	Local	
		242767		Semi-permanent saline	GFS_02	Scoria cones and stony rises (outcrop)	Local	
		243718		Semi-permanent saline	GFS_02	Scoria cones and stony rises (outcrop)	Local	
		243740		Semi-permanent saline	GFS_02	Scoria cones and stony rises (outcrop)	Local	
		243757		Semi-permanent saline	GFS_02	Scoria cones and stony rises (outcrop)	Local	
		246693		Semi-permanent saline	GFS_02	Scoria cones and stony rises (outcrop)	Local	
		247701		Semi-permanent saline	GFS_02	Scoria cones and stony rises (outcrop)	Local	
		248611		Semi-permanent saline	GFS_02	Scoria cones and stony rises (outcrop)	Local	
		248693		Semi-permanent saline	GFS_02	Scoria cones and stony rises (outcrop)	Local	
		248768		Semi-permanent saline	GFS_02	Scoria cones and stony rises (outcrop)	Local	
		249765		Semi-permanent saline	GFS_02	Scoria cones and stony rises (outcrop)	Local	
		250751		Semi-permanent saline	GFS_02	Scoria cones and stony rises (outcrop)	Local	
		251679		Semi-permanent saline	GFS_02	Scoria cones and stony rises (outcrop)	Local	
		251736		Semi-permanent saline	GFS_02	Scoria cones and stony rises (outcrop)	Local	
		251757		Semi-permanent saline	GFS_02	Scoria cones and stony rises (outcrop)	Local	
		254640		Semi-permanent saline	GFS_02	Scoria cones and stony rises (outcrop)	Local	
		254768		Semi-permanent saline	GFS_02	Scoria cones and stony rises (outcrop)	Local	
		255686		Semi-permanent saline	GFS_02	Scoria cones and stony rises (outcrop)	Local	
		257722		Semi-permanent saline	GFS_02	Scoria cones and stony rises (outcrop)	Local	
		257728		Semi-permanent saline	GFS_02	Scoria cones and stony rises (outcrop)	Local	
		257732		Semi-permanent saline	GFS_02	Scoria cones and stony rises (outcrop)	Local	
		258755		Semi-permanent saline	GFS_02	Scoria cones and stony rises (outcrop)	Local	
		259646		Semi-permanent saline	GFS_02	Scoria cones and stony rises (outcrop)	Local	
		259731		Semi-permanent saline	GFS_02	Scoria cones and stony rises (outcrop)	Local	
		260682		Semi-permanent saline	GFS_02	Scoria cones and stony rises (outcrop)	Local	
		260716		Semi-permanent saline	GFS_02	Scoria cones and stony rises (outcrop)	Local	
		261729		Semi-permanent saline	GFS_02	Scoria cones and stony rises (outcrop)	Local	
		263680		Semi-permanent saline	GFS_02	Scoria cones and stony rises (outcrop)	Local	
		263685		Semi-permanent saline	GFS_02	Scoria cones and stony rises (outcrop)	Local	
		263716		Semi-permanent saline	GFS_02	Scoria cones and stony rises (outcrop)	Local	
		264730		Semi-permanent saline	GFS_02	Scoria cones and stony rises (outcrop)	Local	
		265712		Semi-permanent saline	GFS_02	Scoria cones and stony rises (outcrop)	Local	
		265766		Semi-permanent saline	GFS_02	Scoria cones and stony rises (outcrop)	Local	
266719		Semi-permanent saline	GFS_02	Scoria cones and stony rises (outcrop)	Local			

Bioregion	Landscape zone	Wetland No.	Wetland Name	Category	GFS No.	GFS Description	GFS System	Ramsar site
Victorian Volcanic Plain	STONY RISES	266771		Semi-permanent saline	GFS_02	Scoria cones and stony rises (outcrop)	Local	
		268726		Semi-permanent saline	GFS_02	Scoria cones and stony rises (outcrop)	Local	
		269711		Semi-permanent saline	GFS_02	Scoria cones and stony rises (outcrop)	Local	
		269713		Semi-permanent saline	GFS_02	Scoria cones and stony rises (outcrop)	Local	
		272710		Semi-permanent saline	GFS_02	Scoria cones and stony rises (outcrop)	Local	
		277648		Semi-permanent saline	GFS_02	Scoria cones and stony rises (outcrop)	Local	
		277738		Semi-permanent saline	GFS_02	Scoria cones and stony rises (outcrop)	Local	
		280639		Semi-permanent saline	GFS_02	Scoria cones and stony rises (outcrop)	Local	
		300652		Semi-permanent saline	GFS_02	Scoria cones and stony rises (outcrop)	Local	
		12521	Stonyford-Bungador Wetlands	Shallow freshwater marsh	GFS_02	Scoria cones and stony rises (outcrop)	Local	
		21538		Shallow freshwater marsh	GFS_02	Scoria cones and stony rises (outcrop)	Local	
		23537		Shallow freshwater marsh	GFS_02	Scoria cones and stony rises (outcrop)	Local	
		26528		Shallow freshwater marsh	GFS_02	Scoria cones and stony rises (outcrop)	Local	
		26537		Shallow freshwater marsh	GFS_02	Scoria cones and stony rises (outcrop)	Local	
		26540		Shallow freshwater marsh	GFS_02	Scoria cones and stony rises (outcrop)	Local	
		31527		Shallow freshwater marsh	GFS_02	Scoria cones and stony rises (outcrop)	Local	
		31541		Shallow freshwater marsh	GFS_02	Scoria cones and stony rises (outcrop)	Local	
		35543		Shallow freshwater marsh	GFS_02	Scoria cones and stony rises (outcrop)	Local	
		43546		Shallow freshwater marsh	GFS_02	Scoria cones and stony rises (outcrop)	Local	
		33722		Shallow freshwater marsh	GFS_02	Scoria cones and stony rises (outcrop)	Local	
		56542		Shallow freshwater marsh	GFS_02	Scoria cones and stony rises (outcrop)	Local	
		64540		Shallow freshwater marsh	GFS_02	Scoria cones and stony rises (outcrop)	Local	
		74540		Shallow freshwater marsh	GFS_02	Scoria cones and stony rises (outcrop)	Local	
		74605	Shallow freshwater marsh	GFS_02	Scoria cones and stony rises (outcrop)	Local		
		87529	Shallow freshwater marsh	GFS_02	Scoria cones and stony rises (outcrop)	Local		
		125677	Shallow freshwater marsh	GFS_02	Scoria cones and stony rises (outcrop)	Local		
		125680	Shallow freshwater marsh	GFS_02	Scoria cones and stony rises (outcrop)	Local		
		127675	Shallow freshwater marsh	GFS_02	Scoria cones and stony rises (outcrop)	Local		
		128679	Shallow freshwater marsh	GFS_02	Scoria cones and stony rises (outcrop)	Local		
		139681	Shallow freshwater marsh	GFS_02	Scoria cones and stony rises (outcrop)	Local		
		140643	Shallow freshwater marsh	GFS_02	Scoria cones and stony rises (outcrop)	Local		
		144674	Shallow freshwater marsh	GFS_02	Scoria cones and stony rises (outcrop)	Local		
		154666	Shallow freshwater marsh	GFS_02	Scoria cones and stony rises (outcrop)	Local		
		165694	Shallow freshwater marsh	GFS_02	Scoria cones and stony rises (outcrop)	Local		

Bioregion	Landscape zone	Wetland No.	Wetland Name	Category	GFS No.	GFS Description	GFS System	Ramsar site
Victorian Volcanic Plain	STONY RISES	167691		Shallow freshwater marsh	GFS_02	Scoria cones and stony rises (outcrop)	Local	
		169693		Shallow freshwater marsh	GFS_02	Scoria cones and stony rises (outcrop)	Local	
		172695		Shallow freshwater marsh	GFS_02	Scoria cones and stony rises (outcrop)	Local	
		173658		Shallow freshwater marsh	GFS_02	Scoria cones and stony rises (outcrop)	Local	
		180724		Shallow freshwater marsh	GFS_02	Scoria cones and stony rises (outcrop)	Local	
		180728		Shallow freshwater marsh	GFS_02	Scoria cones and stony rises (outcrop)	Local	
		183717		Shallow freshwater marsh	GFS_02	Scoria cones and stony rises (outcrop)	Local	
		185725		Shallow freshwater marsh	GFS_02	Scoria cones and stony rises (outcrop)	Local	
		185728		Shallow freshwater marsh	GFS_02	Scoria cones and stony rises (outcrop)	Local	
		187589		Shallow freshwater marsh	GFS_02	Scoria cones and stony rises (outcrop)	Local	
		190720		Shallow freshwater marsh	GFS_02	Scoria cones and stony rises (outcrop)	Local	
		190723		Shallow freshwater marsh	GFS_02	Scoria cones and stony rises (outcrop)	Local	
		191739		Shallow freshwater marsh	GFS_02	Scoria cones and stony rises (outcrop)	Local	
		197710		Shallow freshwater marsh	GFS_02	Scoria cones and stony rises (outcrop)	Local	
		197747		Shallow freshwater marsh	GFS_02	Scoria cones and stony rises (outcrop)	Local	
		198747		Shallow freshwater marsh	GFS_02	Scoria cones and stony rises (outcrop)	Local	
		199708		Shallow freshwater marsh	GFS_02	Scoria cones and stony rises (outcrop)	Local	
		199720		Shallow freshwater marsh	GFS_02	Scoria cones and stony rises (outcrop)	Local	
		200718		Shallow freshwater marsh	GFS_02	Scoria cones and stony rises (outcrop)	Local	
		200750		Shallow freshwater marsh	GFS_02	Scoria cones and stony rises (outcrop)	Local	
		201716		Shallow freshwater marsh	GFS_02	Scoria cones and stony rises (outcrop)	Local	
		204588		Shallow freshwater marsh	GFS_02	Scoria cones and stony rises (outcrop)	Local	
		208742		Shallow freshwater marsh	GFS_02	Scoria cones and stony rises (outcrop)	Local	
		212739		Shallow freshwater marsh	GFS_02	Scoria cones and stony rises (outcrop)	Local	
		225753		Shallow freshwater marsh	GFS_02	Scoria cones and stony rises (outcrop)	Local	
		234739		Shallow freshwater marsh	GFS_02	Scoria cones and stony rises (outcrop)	Local	
		244744		Shallow freshwater marsh	GFS_02	Scoria cones and stony rises (outcrop)	Local	
		245745		Shallow freshwater marsh	GFS_02	Scoria cones and stony rises (outcrop)	Local	
		250642		Shallow freshwater marsh	GFS_02	Scoria cones and stony rises (outcrop)	Local	
		255623		Shallow freshwater marsh	GFS_02	Scoria cones and stony rises (outcrop)	Local	
		255705		Shallow freshwater marsh	GFS_02	Scoria cones and stony rises (outcrop)	Local	
		258707		Shallow freshwater marsh	GFS_02	Scoria cones and stony rises (outcrop)	Local	
260704		Shallow freshwater marsh	GFS_02	Scoria cones and stony rises (outcrop)	Local			
261614		Shallow freshwater marsh	GFS_02	Scoria cones and stony rises (outcrop)	Local			

Bioregion	Landscape zone	Wetland No.	Wetland Name	Category	GFS No.	GFS Description	GFS System	Ramsar site
Victorian Volcanic Plain	STONY RISES	261762		Shallow freshwater marsh	GFS_02	Scoria cones and stony rises (outcrop)	Local	
		262694		Shallow freshwater marsh	GFS_02	Scoria cones and stony rises (outcrop)	Local	
		269648		Shallow freshwater marsh	GFS_02	Scoria cones and stony rises (outcrop)	Local	
		270638		Shallow freshwater marsh	GFS_02	Scoria cones and stony rises (outcrop)	Local	
		283618		Shallow freshwater marsh	GFS_02	Scoria cones and stony rises (outcrop)	Local	
		283647		Shallow freshwater marsh	GFS_02	Scoria cones and stony rises (outcrop)	Local	
		284626		Shallow freshwater marsh	GFS_02	Scoria cones and stony rises (outcrop)	Local	
		299658		Shallow freshwater marsh	GFS_02	Scoria cones and stony rises (outcrop)	Local	
		912672		Freshwater meadow	GFS_10	Pliocene sands (outcrop)	Intermediate	
		927711		Freshwater meadow	GFS_14	Volcanic plains basalt (outcrop)	Regional	
		939717		Freshwater meadow	GFS_14	Volcanic plains basalt (outcrop)	Regional	
		941726		Freshwater meadow	GFS_14	Volcanic plains basalt (outcrop)	Regional	
		943729		Freshwater meadow	GFS_14	Volcanic plains basalt (outcrop)	Regional	
		382828		Permanent open freshwater	GFS_14	Volcanic plains basalt (outcrop)	Regional	
		382830		Permanent open freshwater	GFS_14	Volcanic plains basalt (outcrop)	Regional	
		392825		Permanent open freshwater	GFS_14	Volcanic plains basalt (outcrop)	Regional	
		91546		Freshwater meadow	GFS_17	Dilwyn Formation (outcrop)	Regional	
		97543		Freshwater meadow	GFS_17	Dilwyn Formation (outcrop)	Regional	WDL
		162568		Freshwater meadow	GFS_17	Dilwyn Formation (outcrop)	Regional	
		146535		Permanent open freshwater	GFS_17	Dilwyn Formation (outcrop)	Regional	
		296759		Freshwater meadow				
		280809		Cundare Pool/Lake Martin	Permanent open freshwater			
		144548		Red Rock Lakes & The Basins	Permanent saline			
		178625	Permanent saline					
		180633	Permanent saline					
		186621	Permanent saline					
		187630	Permanent saline					
		201632	Permanent saline					
		139554	Semi-permanent saline					
		329828		Permanent saline				
		334823		Permanent saline				
		350710		Middle Lough Calvert	Permanent saline			
898723		Lake Colongulac	Permanent saline					



Bioregion	Landscape zone	Wetland No.	Wetland Name	Category	GFS No.	GFS Description	GFS System	Ramsar site
Victorian Volcanic Plain	STONY RISES	932773		Permanent saline				
		958712		Permanent saline				
		998707		Permanent saline				
		134656		Semi-permanent saline				
		137650		Semi-permanent saline				
		187758		Semi-permanent saline				
		191756		Semi-permanent saline				
		195763		Semi-permanent saline				
		266714		Semi-permanent saline				
		269625		Semi-permanent saline				
		269749		Semi-permanent saline				
		292698		Semi-permanent saline				
		292738	Lake Cundare	Semi-permanent saline				
		293713		Semi-permanent saline				
		294679	Lake Beeac	Semi-permanent saline				
		295705		Semi-permanent saline				
		296725		Semi-permanent saline				
		296754		Semi-permanent saline				
		297718		Semi-permanent saline				
		304701		Semi-permanent saline				
	315728		Semi-permanent saline					
	328661	Lower Lough Calvert & Lake Thurrumbong	Semi-permanent saline					
	355609		Semi-permanent saline	GFS_01	Quaternary sediments	Local		
	341667	STONY RISES	Semi-permanent saline					
	338684		Semi-permanent saline					
	341799		Semi-permanent saline					
	351812		Semi-permanent saline					
	934727		Semi-permanent saline					
	241420	Lake Corangamite	#N/A					
	703612	THOMPSONS	Shallow freshwater marsh	GFS_01	Quaternary sediments	Local		
	492642		Permanent open freshwater	GFS_14	Volcanic plains basalt (outcrop)	Regional		
	591658		Permanent open freshwater	GFS_14	Volcanic plains basalt (outcrop)	Regional		
	605641		Permanent open freshwater	GFS_14	Volcanic plains basalt (outcrop)	Regional		
615644		Permanent open freshwater	GFS_14	Volcanic plains basalt (outcrop)	Regional			

Bioregion	Landscape zone	Wetland No.	Wetland Name	Category	GFS No.	GFS Description	GFS System	Ramsar site
Victorian Volcanic Plain	THOMPSONS	622640		Permanent open freshwater	GFS_14	Volcanic plains basalt (outcrop)	Regional	
		743595		Shallow freshwater marsh	GFS_14	Volcanic plains basalt (outcrop)	Regional	
		470630		Permanent saline				
	UPPER BARWON	392618		Freshwater meadow	GFS_01	Quaternary sediments	Local	
		409598		Freshwater meadow	GFS_01	Quaternary sediments	Local	
		481611		Freshwater meadow	GFS_01	Quaternary sediments	Local	
		551579		Freshwater meadow	GFS_01	Quaternary sediments	Local	
		383607		Permanent open freshwater	GFS_01	Quaternary sediments	Local	
		397642		Permanent open freshwater	GFS_01	Quaternary sediments	Local	
		469592		Permanent open freshwater	GFS_01	Quaternary sediments	Local	
		388574		Shallow freshwater marsh	GFS_01	Quaternary sediments	Local	
		396585		Shallow freshwater marsh	GFS_01	Quaternary sediments	Local	
		406588		Shallow freshwater marsh	GFS_01	Quaternary sediments	Local	
		467627		Permanent open freshwater	GFS_02	Scoria cones and stony rises (outcrop)	Local	
		468587		Permanent open freshwater	GFS_02	Scoria cones and stony rises (outcrop)	Local	
		401596		Permanent open freshwater				
		385579		Permanent saline				
	WOADY YALOK	369898		Deep freshwater marsh	GFS_01	Quaternary sediments	Local	
		283919		Freshwater meadow	GFS_01	Quaternary sediments	Local	
		307845		Freshwater meadow	GFS_01	Quaternary sediments	Local	
		317853		Freshwater meadow	GFS_01	Quaternary sediments	Local	
		326854		Freshwater meadow	GFS_01	Quaternary sediments	Local	
		327870		Freshwater meadow	GFS_01	Quaternary sediments	Local	
		348861		Freshwater meadow	GFS_01	Quaternary sediments	Local	
		357922		Freshwater meadow	GFS_01	Quaternary sediments	Local	
		364925		Freshwater meadow	GFS_01	Quaternary sediments	Local	
		372921		Freshwater meadow	GFS_01	Quaternary sediments	Local	
		386389		Freshwater meadow	GFS_01	Quaternary sediments	Local	
		396411		Freshwater meadow	GFS_01	Quaternary sediments	Local	
		397415		Freshwater meadow	GFS_01	Quaternary sediments	Local	
		402404		Freshwater meadow	GFS_01	Quaternary sediments	Local	
		205200		Permanent open freshwater	GFS_01	Quaternary sediments	Local	
	333287		Permanent open freshwater	GFS_01	Quaternary sediments	Local		
310832		Shallow freshwater marsh	GFS_01	Quaternary sediments	Local			

Bioregion	Landscape zone	Wetland No.	Wetland Name	Category	GFS No.	GFS Description	GFS System	Ramsar site
Victorian Volcanic Plain	WOADY YALOK	318930		Shallow freshwater marsh	GFS_01	Quaternary sediments	Local	
		339850		Shallow freshwater marsh	GFS_01	Quaternary sediments	Local	
		340895		Shallow freshwater marsh	GFS_01	Quaternary sediments	Local	
		343889		Shallow freshwater marsh	GFS_01	Quaternary sediments	Local	
		345920		Shallow freshwater marsh	GFS_01	Quaternary sediments	Local	
		364887		Shallow freshwater marsh	GFS_01	Quaternary sediments	Local	
		367927		Shallow freshwater marsh	GFS_01	Quaternary sediments	Local	
		370928		Shallow freshwater marsh	GFS_01	Quaternary sediments	Local	
		374935		Shallow freshwater marsh	GFS_01	Quaternary sediments	Local	
		389379		Shallow freshwater marsh	GFS_01	Quaternary sediments	Local	
		277867		Freshwater meadow	GFS_10	Pliocene sands (outcrop)	Intermediate	
		282870		Shallow freshwater marsh	GFS_10	Pliocene sands (outcrop)	Intermediate	
		283862		Shallow freshwater marsh	GFS_10	Pliocene sands (outcrop)	Intermediate	
		290880		Shallow freshwater marsh	GFS_10	Pliocene sands (outcrop)	Intermediate	
		401388		Deep freshwater marsh	GFS_13	Central Highlands volcanics (outcrop)	Intermediate	
		494040		Freshwater meadow	GFS_13	Central Highlands volcanics (outcrop)	Intermediate	
		167153		Permanent open freshwater	GFS_13	Central Highlands volcanics (outcrop)	Intermediate	
		179144		Permanent open freshwater	GFS_13	Central Highlands volcanics (outcrop)	Intermediate	
		197091		Permanent open freshwater	GFS_13	Central Highlands volcanics (outcrop)	Intermediate	
		256242		Permanent open freshwater	GFS_13	Central Highlands volcanics (outcrop)	Intermediate	
		257244		Permanent open freshwater	GFS_13	Central Highlands volcanics (outcrop)	Intermediate	
		320227		Permanent open freshwater	GFS_13	Central Highlands volcanics (outcrop)	Intermediate	
		382365		Permanent open freshwater	GFS_13	Central Highlands volcanics (outcrop)	Intermediate	
		387373		Permanent open freshwater	GFS_13	Central Highlands volcanics (outcrop)	Intermediate	
		403427		Permanent open freshwater	GFS_13	Central Highlands volcanics (outcrop)	Intermediate	
		501104		Permanent open freshwater	GFS_13	Central Highlands volcanics (outcrop)	Intermediate	
		293074		Shallow freshwater marsh	GFS_13	Central Highlands volcanics (outcrop)	Intermediate	
		519104		Shallow freshwater marsh	GFS_13	Central Highlands volcanics (outcrop)	Intermediate	
		332892		Freshwater meadow	GFS_14	Volcanic plains basalt (outcrop)	Regional	
		371930		Freshwater meadow	GFS_14	Volcanic plains basalt (outcrop)	Regional	
		252042		Permanent open freshwater	GFS_14	Volcanic plains basalt (outcrop)	Regional	
		308986		Permanent open freshwater	GFS_14	Volcanic plains basalt (outcrop)	Regional	
		310007		Permanent open freshwater	GFS_14	Volcanic plains basalt (outcrop)	Regional	
		346952		Permanent open freshwater	GFS_14	Volcanic plains basalt (outcrop)	Regional	

Bioregion	Landscape zone	Wetland No.	Wetland Name	Category	GFS No.	GFS Description	GFS System	Ramsar site
Victorian Volcanic Plain	WOADY YALOK	393963		Permanent open freshwater	GFS_14	Volcanic plains basalt (outcrop)	Regional	
		330891		Shallow freshwater marsh	GFS_14	Volcanic plains basalt (outcrop)	Regional	
		426999		Shallow freshwater marsh	GFS_14	Volcanic plains basalt (outcrop)	Regional	
		228103		Freshwater meadow				
	LISMORE	908986		Freshwater meadow	GFS_01	Quaternary sediments	Local	
	STONY RISES	835661		Deep freshwater marsh	GFS_02	Scoria cones and stony rises (outcrop)	Local	
		839675		Permanent saline				
840643			Permanent saline					
Warrnambool Plain	AIRE	144020	Aire River	Permanent saline				
	CURDIES	813320		Freshwater meadow	GFS_01	Quaternary sediments	Local	
		958537		Freshwater meadow	GFS_01	Quaternary sediments	Local	
		703384		Permanent open freshwater	GFS_01	Quaternary sediments	Local	
		787430		Permanent open freshwater	GFS_01	Quaternary sediments	Local	
		807424		Permanent open freshwater	GFS_01	Quaternary sediments	Local	
		816322		Permanent open freshwater	GFS_01	Quaternary sediments	Local	
		820324		Permanent open freshwater	GFS_01	Quaternary sediments	Local	
		866560		Permanent open freshwater	GFS_01	Quaternary sediments	Local	
		606316		Semi-permanent saline	GFS_01	Quaternary sediments	Local	
		610314		Semi-permanent saline	GFS_01	Quaternary sediments	Local	
		613305		Semi-permanent saline	GFS_01	Quaternary sediments	Local	
		634302		Semi-permanent saline	GFS_01	Quaternary sediments	Local	
		636257		Semi-permanent saline	GFS_01	Quaternary sediments	Local	
		638293		Semi-permanent saline	GFS_01	Quaternary sediments	Local	
		644250		Semi-permanent saline	GFS_01	Quaternary sediments	Local	
		833554		Sewerage pond	GFS_01	Quaternary sediments	Local	
		924559		Shallow freshwater marsh	GFS_01	Quaternary sediments	Local	
		970524		Shallow freshwater marsh	GFS_01	Quaternary sediments	Local	
		629293		Semi-permanent saline	GFS_01	Quaternary sediments	Local	
		649263		Semi-permanent saline	GFS_01	Quaternary sediments	Local	
		640265		Permanent saline	GFS_01	Quaternary sediments	Local	
		977514		Shallow freshwater marsh	GFS_02	Scoria cones and stony rises (outcrop)	Local	
		749396		Permanent open freshwater	GFS_04	Heytesbury marl (outcrop)	Local	
		799308		Permanent open freshwater	GFS_04	Heytesbury marl (outcrop)	Local	
		818320		Permanent open freshwater	GFS_04	Heytesbury marl (outcrop)	Local	

Bioregion	Landscape zone	Wetland No.	Wetland Name	Category	GFS No.	GFS Description	GFS System	Ramsar site	
Warrnambool Plain	CURDIES	820456		Permanent open freshwater	GFS_04	Heytesbury marl (outcrop)	Local		
		828317		Permanent open freshwater	GFS_04	Heytesbury marl (outcrop)	Local		
		879461		Permanent open freshwater	GFS_04	Heytesbury marl (outcrop)	Local		
		891333		Permanent open freshwater	GFS_04	Heytesbury marl (outcrop)	Local		
		944410		Permanent open freshwater	GFS_04	Heytesbury marl (outcrop)	Local		
		607302		Permanent open freshwater	GFS_10	Pliocene sands (outcrop)	Intermediate		
		657412		Permanent open freshwater	GFS_10	Pliocene sands (outcrop)	Intermediate		
		658411		Permanent open freshwater	GFS_10	Pliocene sands (outcrop)	Intermediate		
		676425		Permanent open freshwater	GFS_10	Pliocene sands (outcrop)	Intermediate		
		687370		Permanent open freshwater	GFS_10	Pliocene sands (outcrop)	Intermediate		
		662295		Shallow freshwater marsh	GFS_10	Pliocene sands (outcrop)	Intermediate		
		663285		Shallow freshwater marsh	GFS_10	Pliocene sands (outcrop)	Intermediate		
		632254		Deep freshwater marsh	GFS_16	Port Campbell Limestone (outcrop)	Regional		
		632255		Deep freshwater marsh	GFS_16	Port Campbell Limestone (outcrop)	Regional		
		593327		Permanent open freshwater	GFS_16	Port Campbell Limestone (outcrop)	Regional		
		611365		Permanent open freshwater	GFS_16	Port Campbell Limestone (outcrop)	Regional		
		625383		Permanent open freshwater	GFS_16	Port Campbell Limestone (outcrop)	Regional		
		834216		Permanent open freshwater	GFS_16	Port Campbell Limestone (outcrop)	Regional		
		567291		Deep freshwater marsh	GFS_16	Port Campbell Limestone (outcrop)	Regional		
		596281		Deep freshwater marsh	GFS_16	Port Campbell Limestone (outcrop)	Regional		
		610269		Deep freshwater marsh	GFS_16	Port Campbell Limestone (outcrop)	Regional		
		626285		Semi-permanent saline					
		GELLIBRAND	883150	Princetown Wetlands	Deep freshwater marsh	GFS_01	Quaternary sediments	Local	
			856188		Permanent open freshwater	GFS_01	Quaternary sediments	Local	
			943314		Permanent open freshwater	GFS_04	Heytesbury marl (outcrop)	Local	
			945311		Permanent open freshwater	GFS_04	Heytesbury marl (outcrop)	Local	
			18390		Freshwater meadow	GFS_10	Pliocene sands (outcrop)	Intermediate	
			931353		Permanent open freshwater	GFS_10	Pliocene sands (outcrop)	Intermediate	
		STONY RISES	933372		Permanent open freshwater	GFS_10	Pliocene sands (outcrop)	Intermediate	
			78445		Permanent open freshwater	GFS_10	Pliocene sands (outcrop)	Intermediate	
			988431		Permanent open freshwater	GFS_10	Pliocene sands (outcrop)	Intermediate	
			989472		Permanent open freshwater	GFS_10	Pliocene sands (outcrop)	Intermediate	
			75466		Freshwater meadow	GFS_17	Dilwyn Formation (outcrop)	Regional	

## References

- AFFA and EA (2000) *A national action plan for salinity and water quality*, Agriculture, Fisheries and Forestry, Australia and Environment Australia.
- CCMA (2003a) *Corangamite salinity action plan 2003*, Review of the salinity management plan: Restoring the balance, Regional draft edn, Technical report 1, Corangamite Catchment Management Authority, Colac, Victoria.
- CCMA (2003b) *Corangamite salinity action plan 2003*, Salinity action plan, Regional draft edn, Technical report 2, Corangamite Catchment Management Authority, Colac, Victoria.
- CCMA (2004a) *Review of regional drainage schemes*, Summary document for public comment, Draft edn, Corangamite Catchment Management Authority, Melbourne, Victoria.
- CCMA (2004b) *Corangamite river health strategy*, Summary report, Draft for public comment, Corangamite Catchment Management Authority, Colac, Victoria.
- CCMA (2005) *Corangamite Wetland Inventory*, Report prepared by the Centre for Environmental Management, University of Ballarat for the Corangamite Catchment Management Authority, Victoria. Available: [www.ccma.vic.gov.au/publications/](http://www.ccma.vic.gov.au/publications/).
- Coram, J.E. (1996) *Groundwater - surface water interactions around shallow lakes of the Western District Plains, Victoria*, A thesis submitted in partial fulfilment of the requirements for the degree of Master of Science, University of Melbourne, Victoria.
- Dahlhaus, P., Nicholson, C., Anderson, G., Shovelton, J. and Stephens, M. (2002) *Corangamite Salinity Action Plan*, Regional Overview, Background report No 1, Corangamite Catchment Management Authority.
- Dahlhaus, P.G. and Cox, J.W. (2005) Geomorphic and historical evidence of salinity in the Corangamite region, Australia: implications for current salinity management, *in* 'Managing Saline Soils and Water: Science, Technology and Social Issues', International Salinity Forum, Riverside, California.
- Dahlhaus, P.G., and MacEwan, R.J. (1997) Dryland Salinity in South West Victoria: Challenging the Myth, *in* Ed. McNally, G.H., 'Collected Case Studies in Engineering Geology, Hydrogeology and Environmental Geology', Environmental, Engineering and Hydrogeology Specialist Group, Geological Society of Australia, NSW.
- EA (2001) *A directory of important wetlands in Australia*, Third edn, Environment Australia, Canberra. Available: [www.deh.gov.au/water/wetlands/database/directory/](http://www.deh.gov.au/water/wetlands/database/directory/).
- Frazier, S., Editor (2002) A directory of wetlands of international importance, [www.wetlands.org/RSDB/default.htm](http://www.wetlands.org/RSDB/default.htm).
- Gill, B. (1989) *Hydrogeological review of salinity problems in the Barwon/Corangamite Region*, Investigations Branch, Rural Water Commission of Victoria, No. 1988/16.
- Hatton, T.J. and Evans, R. (1998) *Dependence of ecosystems on groundwater and its significance to Australia*, Occasional paper no. 12/98, Land and Water Resources Research and Development Corporation, Canberra.
- Land Conservation Council (1976) *Report on the Corangamite study area*, Land Conservation Council, Melbourne, Victoria.
- Maddocks, G.E. (1967) 'The geochemistry of surface waters of the western district of Victoria', *Australian Journal of Marine and Freshwater Research*, **15**, pp 35-52.

McNiven, I.J. (1998) 'Aboriginal settlement of the saline lake and volcanic landscapes of Corangamite Basin, western Victoria', *The Artefact*, **21**, pp 63-94.

Murray, B.B.R., Zeppel, M.J.B., Hose, G.C. and Eamus, D. (2003) 'Groundwater-dependent ecosystems in Australia: it's more than just water for rivers', *Ecological Management & Restoration*, **4**(2), pp 110-113.

Nicholson, C., Straw, W., Conroy, F. and MacEwan, R., Editors (1992) *Restoring the Balance*, Dryland salinity strategy for the Corangamite Salinity Region, Report prepared by the Corangamite Salinity Forum, DCNR, Colac, Victoria.

NRE (2002) *Western District Lakes Ramsar site: strategic management plan*, Department of Natural Resources and Environment, Melbourne, Victoria. Available: [www.nre.vic.gov.au](http://www.nre.vic.gov.au).

Taylor, R., Wierzbowski, P., Lowe, K.W., Ross J, Moorrees, A. and Ahern L (2003) *Strategic Overview for the Victorian Volcanic Plain Bioregion*, Biodiversity action planning, Department of Sustainability and Environment, Victoria. Available: [www.dpi.vic.gov.au/dpi/vro/vrosite.nsf/](http://www.dpi.vic.gov.au/dpi/vro/vrosite.nsf/).

Thompson, B.R. (1971) *The geology and hydrogeology of the Corangamite region*, MSc Thesis, University of Melbourne, Unpublished.

Williams, W.D. (1995) 'Lake Corangamite, Australia, a permanent saline lake: conservation and management issues', *Lakes & Reservoirs: Research and Management*, **1**, pp 55-64.

Williams, W. D. (2001) Salinisation: unplumbed salt in a parched landscape, [www.wetlandcare.com.au](http://www.wetlandcare.com.au).

Williams, W.D. and Buckney, R.T. (1976) 'Stability of ionic proportions in five salt lakes in Victoria, Australia', *Marine and Freshwater Research*, **27**, pp 367-77.